

# NEW MEXICO

## CONTACT THE STAFF

### COORDINATOR:

Joelle Jacobs  
Email: [Joelle.jacobs@state.nm.us](mailto:Joelle.jacobs@state.nm.us)  
Phone: 505-827-0219  
Fax: 505-827-1064

### ADDRESS:

New Mexico Department of Health  
1190 S. St Francis Drive, S1258  
P.O. Box 26110  
Santa Fe, NM 87505

## SCREENING REQUIREMENTS

Does the jurisdiction require screening of pregnant women for hepatitis B infection or hepatitis B surface antigen (HBsAg)?

No

Does the jurisdiction specifically require reporting of positive HBsAg status in pregnant women?

No

## COMPLETION OF HEPATITIS B VACCINATION SERIES

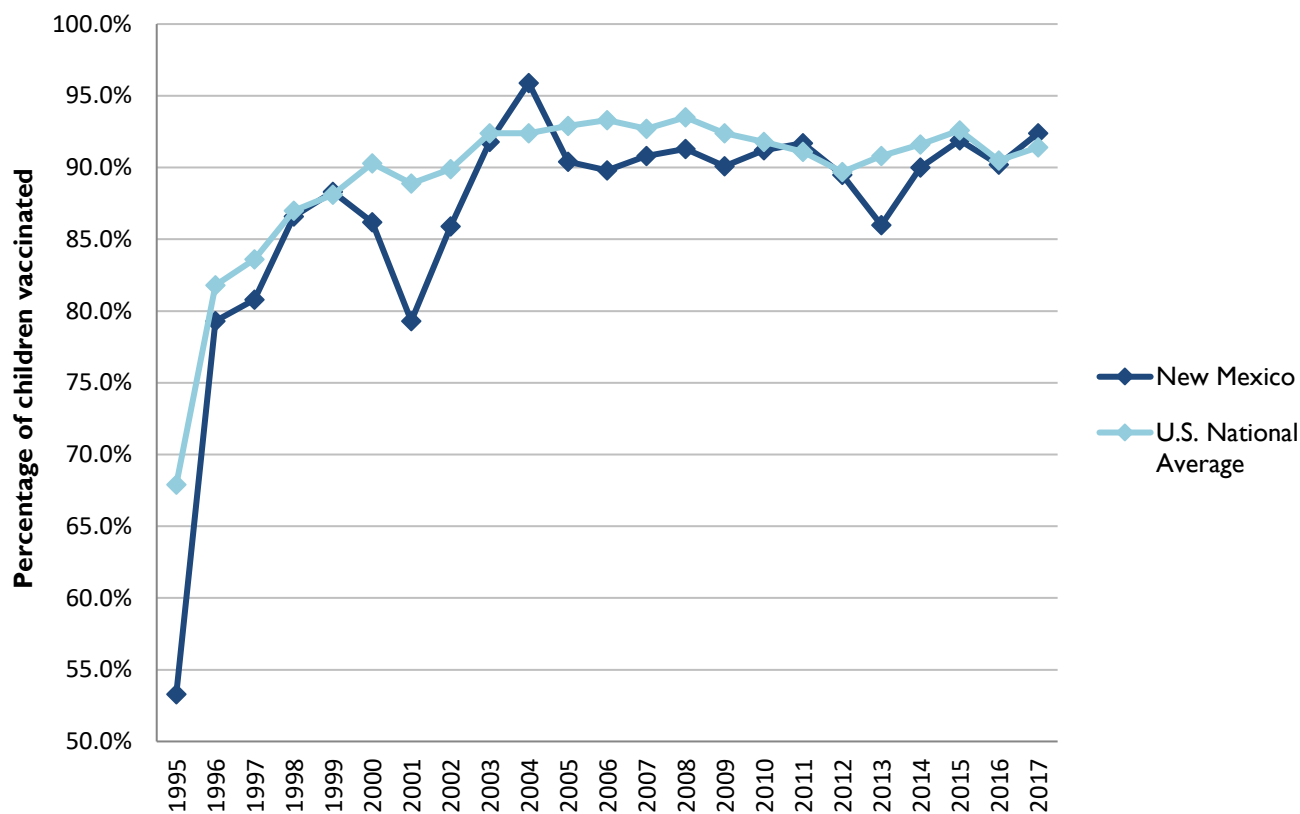
3 or more doses among children 19-35 months of age

	Percentage of children 19-35 months of age receiving 3 or more doses	Rank among other states	U.S. National Average	#1 ranked state and coverage
1995	53.3 ± 8.6%	41	67.9 ± 1.3%	88.5 ± 5.4% (South Carolina)
1996	79.3 ± 5.4%	34	81.8 ± 0.9%	95.8 ± 2.2% (South Carolina)
1997	80.8 ± 5.7%	42	83.6 ± 0.8%	91.6 ± 4.2% (New Jersey)
1998	86.6 ± 4.7%	28	87.0 ± 0.7%	94.1 ± 2.7% (South Carolina)
1999	88.3 ± 4.0%	29	88.1 ± 0.7%	94.0 ± 3.1% (Rhode Island)
2000	86.2 ± 4.6%	43	90.3 ± 0.6%	96.4 ± 1.9% (Rhode Island)
2001	79.3 ± 4.7%	48	88.9 ± 0.7%	95.8 ± 2.2% (Rhode Island)
2002	85.9 ± 5.2%	47	89.9 ± 0.7%	97.0 ± 2.0% (Rhode Island)
2003	91.8 ± 3.9%	31	92.4 ± 0.6%	98.2 ± 1.4% (Connecticut)
2004	95.9 ± 2.5%	2	92.4 ± 0.6%	96.8 ± 1.7% (Florida)
2005	90.4 ± 4.5%	41	92.9 ± 0.6%	97.9 ± 2.0% (Massachusetts)
2006	89.8 ± 3.4%	45	93.3 ± 0.6%	97.8 ± 1.6% (Rhode Island)
2007	90.8 ± 5.1%	43	92.7 ± 0.7%	98.6 ± 1.5% (New Hampshire)
2008	91.3 ± 4.5%	43	93.5 ± 0.7%	98.1 ± 1.6% (Connecticut)
2009	91.7 ± 3.5%	19	92.4 ± 0.7%	98.8 ± 1.5% (Rhode Island)
2010	91.2 ± 3.3%	32	91.8 ± 0.7%	98.3 ± 1.5% (North Dakota)
2011	91.7 ± 3.5%	19	91.1 ± 0.7%	97.1 ± 1.7% (Louisiana)
2012	89.5 ± 4.5%	29	89.7 ± 0.9%	96.3 ± 3.0% (Georgia)
2013	86.0 ± 5.1%	47	90.8 ± 1.0%	96.7 ± 2.3% (Rhode Island)
2014	90.0 ± 5.0%	38	91.6 ± 0.9%	97.6 ± 1.8% (Louisiana)
2015	91.9 ± 4.4%	30	92.6 ± 0.7%	97.3 ± 2.3% (Connecticut)
2016	90.2 ± 4.2%	32	90.5 ± 1.1%	97.4 ± 1.9% (Iowa)
2017	92.4 ± 4.3%	20	91.4 ± 0.9%	97.7 ± 1.6% (North Dakota)

Data compiled by the ALC from National Immunization Surveys, 1995-2017<sup>1</sup>,  
<https://www.cdc.gov/vaccines/imz-managers/coverage/childvaxview/data-reports/hepb/index.html>

## GRAPH:

### Percentage of Children 19-35 Months of Age Receiving 3 or More Doses of Hepatitis B Vaccine



Data compiled by the ALC from National Immunization Surveys, 1995-2017<sup>1</sup>, <https://www.cdc.gov/vaccines/imz-managers/coverage/childvaxview/data-reports/hepb/index.html>

## HEPATITIS B BIRTH DOSE VACCINATION COVERAGE

1 or more dose among infants within 3 days of birth

	Percentage of infants receiving			Rank among other states according to		
	1 dose within 1 day of birth*	1 dose within 2 days of birth	1 dose within 3 days of birth*	1 dose within 1 day of birth	1 dose within 2 days of birth	1 dose within 3 days of birth
2003		39.4 ± 7.7%		N/A	31	N/A
2004		49.6 ± 7.1%		N/A	27	N/A
2005		34.6 ± 7.4%		N/A	39	N/A
2006	40.2 ± 5.3%	45.2 ± 5.5%	46.7 ± 5.5%	33	37	37
2007	35.1 ± 7.6%	43.3 ± 8.0%	44.4 ± 8.0%	39	39	39
2008	40.2 ± 7.5%	48.7 ± 7.6%	52.3 ± 7.6%	37	38	38
2009	43.3 ± 6.7%	48.6 ± 6.8%	51.2 ± 6.8%	41	41	40
2010	51.2 ± 6.6%	58.5 ± 6.4%	60.0 ± 6.3%	35	36	40
2011	54.8 ± 7.7%	62.0 ± 7.6%	64.0 ± 7.6%	38	41	41
2012	62.6 ± 7.3%	68.7 ± 7.0%	68.9 ± 7.0%	31	32	36
2013	60.9 ± 7.5%	65.3 ± 7.3%	67.5 ± 7.0%	36	40	40
2014	50.8 ± 8.6%	58.5 ± 8.5%	61.4 ± 8.4%	45	45	45
2015	52.5 ± 7.8%	64.4 ± 7.7%	67.8 ± 7.5%	45	43	42
2016	55.2 ± 7.1%	64.2 ± 6.7%	67.5 ± 6.6%	43	42	43
2017	60.9 ± 7.5%	67.9 ± 7.3%	71.7 ± 6.8%	41	41	37

\*No data available 2003-2005

### 2017 U.S. NATIONAL AVERAGE

Day 1: 65.7 ± 1.6%  
Day 2: 72.0 ± 1.6%  
Day 3: 73.6 ± 1.6%

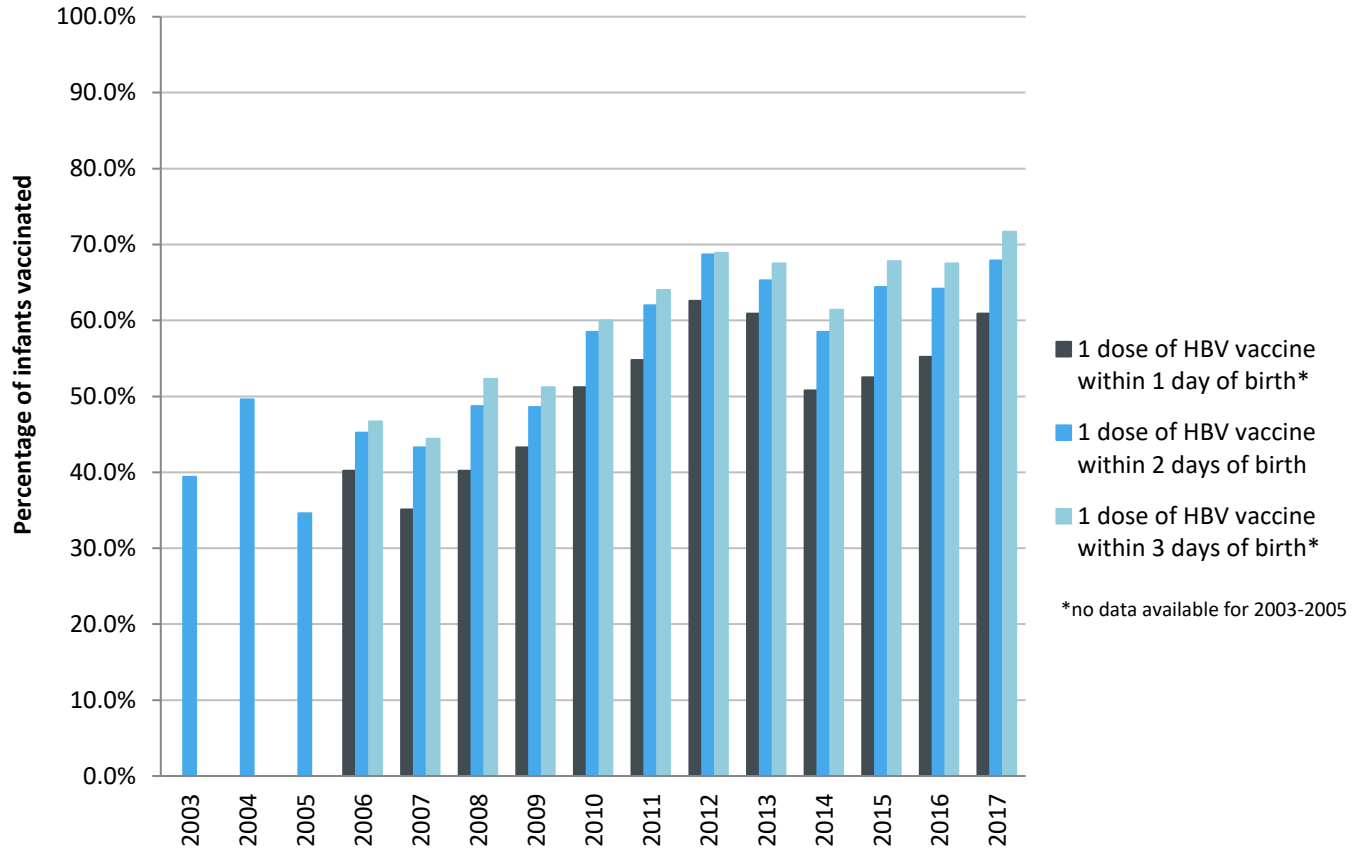
### 2017 HIGHEST BIRTH DOSE COVERAGE

Day 1: 82.0 ± 5.7% (Kentucky)  
Day 2: 84.1 ± 5.6% (Kentucky)  
Day 3: 84.1 ± 5.6% (Kentucky)

Data compiled by the ALC from National Immunization Surveys, 1995-2017<sup>1</sup>,  
<https://www.cdc.gov/vaccines/imz-managers/coverage/childvaxview/data-reports/hepb/index.html>

## GRAPH:

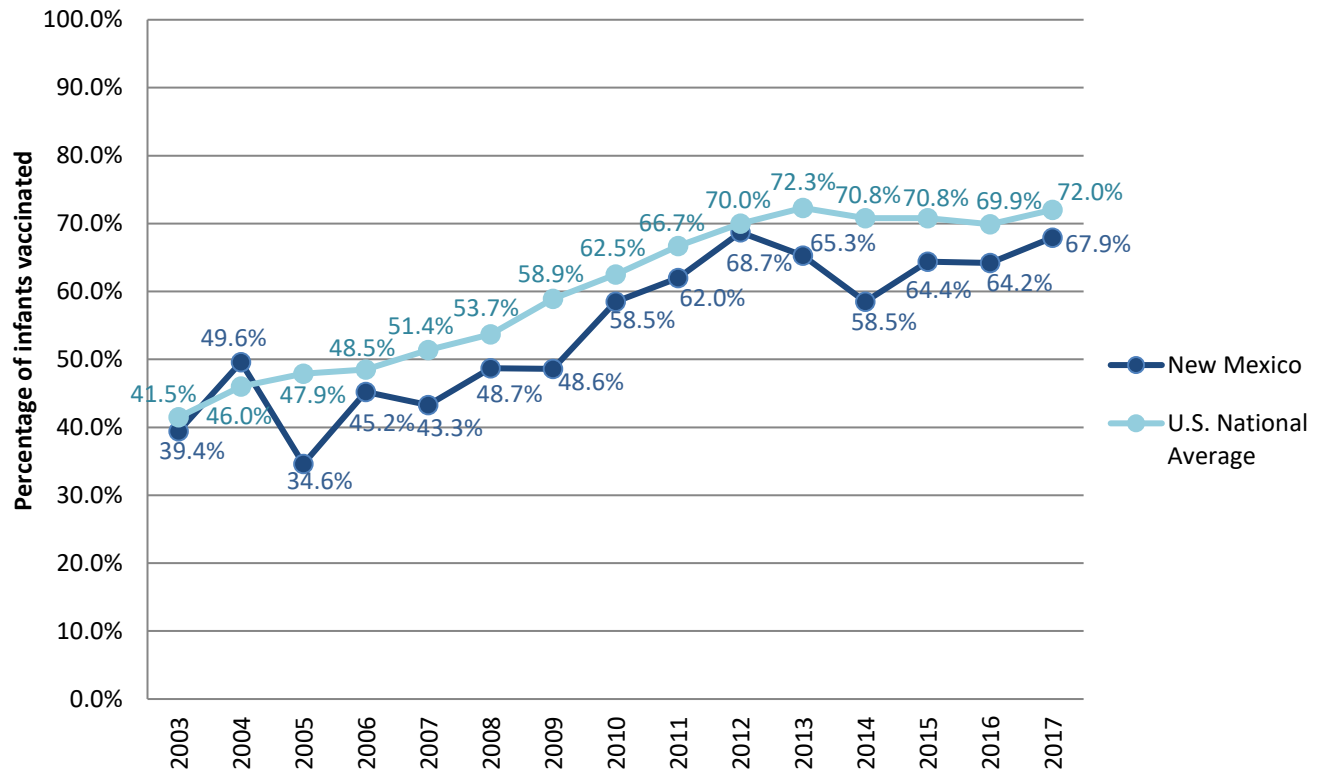
Estimated Vaccination Coverage for Hepatitis B Vaccine among Children from Birth to 3 Days of Age in New Mexico



Data compiled by the ALC from National Immunization Surveys, 1995-2017<sup>1</sup>,  
<https://www.cdc.gov/vaccines/imz-managers/coverage/childvaxview/data-reports/hepb/index.html>

## GRAPH:

### Percentage of Infants Receiving 1 Dose of Hepatitis B Vaccine within 2 Days of Birth



Data compiled by the ALC from National Immunization Surveys, 1995-2017<sup>1</sup>,  
<https://www.cdc.gov/vaccines/imz-managers/coverage/childvaxview/data-reports/hepb/index.html>

<sup>1</sup> The data from the National Immunization Surveys constitute a composite of data from children who were 19-35 months of age at the time of the survey. Therefore, the data might reflect a different estimate from the states' own birth cohort data.