

KENTUCKY

CONTACT THE STAFF

COORDINATOR:

Deborah Bolton-Plucknett, RN
Email: deb.bolton-plucknett@ky.gov
Phone: 502-564-4478 ext. 4259
Fax: 502-564-4760

ADDRESS:

Kentucky Immunization Program
Department of Public Health
Division of Epidemiology and Health Planning
275 East Main Street, HS 2E-B
Frankfort, KY 40621

SCREENING REQUIREMENTS

Does the jurisdiction require screening of pregnant women for hepatitis B infection or hepatitis B surface antigen (HBsAg)?

Yes - KY Rev. Stat. Ann. § 214.160

Does the jurisdiction specifically require reporting of positive HBsAg status in pregnant women?

Yes - 902 KY. Admin. Regs. 2:020 Section 1(1)

COMPLETION OF HEPATITIS B VACCINATION SERIES

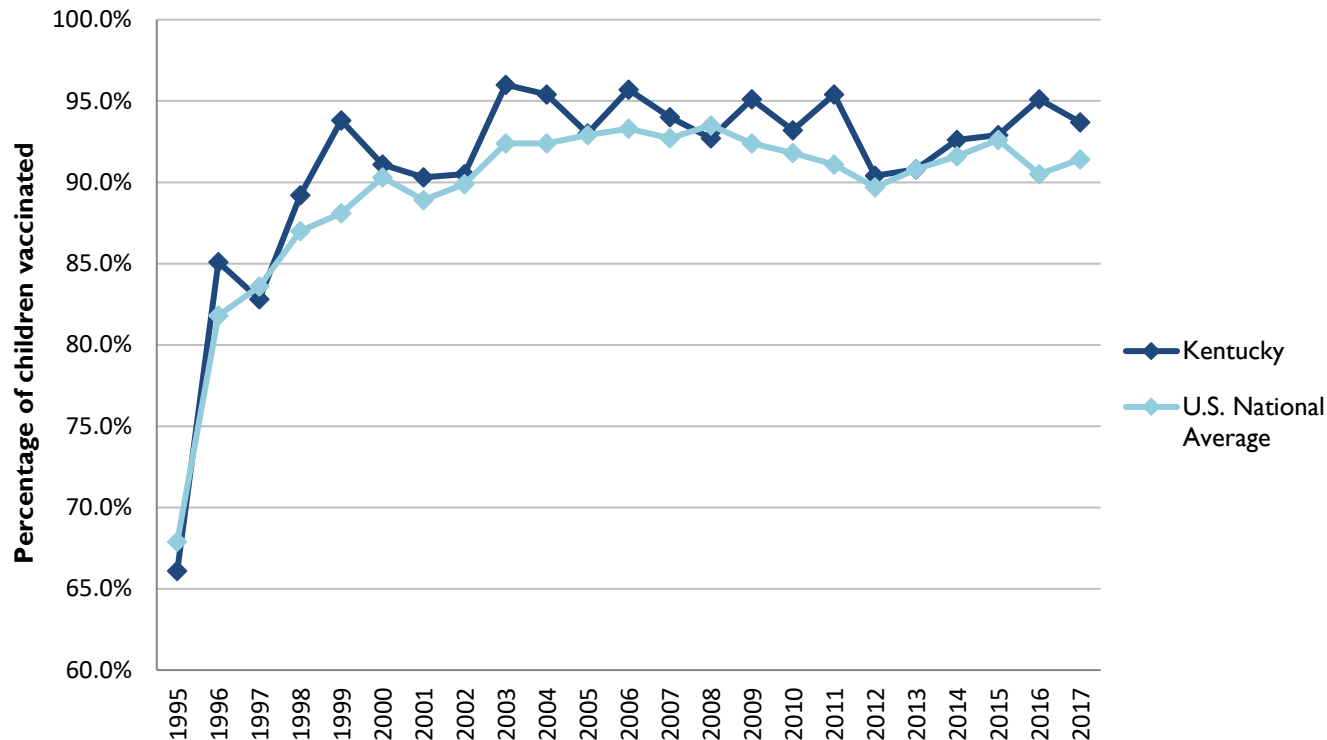
3 or more doses among children 19-35 months of age

	Percentage of children 19-35 months of age receiving 3 or more doses	Rank among other states	U.S. National Average	#1 ranked state and coverage
1995	66.1 ± 7.3%	26	67.9 ± 1.3%	88.5 ± 5.4% (South Carolina)
1996	85.1 ± 4.8%	17	81.8 ± 0.9%	95.8 ± 2.2% (South Carolina)
1997	82.8 ± 5.0%	32	83.6 ± 0.8%	91.6 ± 4.2% (New Jersey)
1998	89.2 ± 3.7%	15	87.0 ± 0.7%	94.1 ± 2.7% (South Carolina)
1999	93.8 ± 3.1%	3	88.1 ± 0.7%	94.0 ± 3.1% (Rhode Island)
2000	91.1 ± 3.6%	19	90.3 ± 0.6%	96.4 ± 1.9% (Rhode Island)
2001	90.3 ± 3.5%	16	88.9 ± 0.7%	95.8 ± 2.2% (Rhode Island)
2002	90.5 ± 4.7%	29	89.9 ± 0.7%	97.0 ± 2.0% (Rhode Island)
2003	96.0 ± 2.7%	6	92.4 ± 0.6%	98.2 ± 1.4% (Connecticut)
2004	95.4 ± 3.1%	4	92.4 ± 0.6%	96.8 ± 1.7% (Florida)
2005	93.0 ± 3.9%	22	92.9 ± 0.6%	97.9 ± 2.0% (Massachusetts)
2006	95.7 ± 2.5%	9	93.3 ± 0.6%	97.8 ± 1.6% (Rhode Island)
2007	94.0 ± 3.8%	22	92.7 ± 0.7%	98.6 ± 1.5% (New Hampshire)
2008	92.7 ± 4.0%	34	93.5 ± 0.7%	98.1 ± 1.6% (Connecticut)
2009	95.1 ± 2.4%	14	92.4 ± 0.7%	98.8 ± 1.5% (Rhode Island)
2010	93.2 ± 3.3%	24	91.8 ± 0.7%	98.3 ± 1.5% (North Dakota)
2011	95.4 ± 3.7%	5	91.1 ± 0.7%	97.1 ± 1.7% (Louisiana)
2012	90.4 ± 4.0%	23	89.7 ± 0.9%	96.3 ± 3.0% (Georgia)
2013	90.8 ± 5.1%	28	90.8 ± 1.0%	96.7 ± 2.3% (Rhode Island)
2014	92.6 ± 4.3%	21	91.6 ± 0.9%	97.6 ± 1.8% (Louisiana)
2015	92.9 ± 3.9%	25	92.6 ± 0.7%	97.3 ± 2.3% (Connecticut)
2016	95.1 ± 2.8%	7	90.5 ± 1.1%	97.4 ± 1.9% (Iowa)
2017	93.7 ± 3.8%	9	91.4 ± 0.9%	97.7 ± 1.6% (North Dakota)

Data compiled by the ALC from National Immunization Surveys, 1995-2017¹,
<https://www.cdc.gov/vaccines/imz-managers/coverage/childvaxview/data-reports/hepb/index.html>

GRAPH:

Percentage of Children 19-35 Months of Age Receiving 3 or More Doses of Hepatitis B Vaccine



Data compiled by the ALC from National Immunization Surveys, 1995-2017¹, <https://www.cdc.gov/vaccines/imz-managers/coverage/childvaxview/data-reports/hepb/index.html>

HEPATITIS B BIRTH DOSE VACCINATION COVERAGE

1 or more dose among infants within 3 days of birth

	Percentage of infants receiving			Rank among other states according to		
	1 dose within 1 day of birth*	1 dose within 2 days of birth	1 dose within 3 days of birth*	1 dose within 1 day of birth	1 dose within 2 days of birth	1 dose within 3 days of birth
2003		72.5 ± 6.4%		N/A	4	N/A
2004		72.5 ± 6.4%		N/A	7	N/A
2005		74.0 ± 7.6%		N/A	5	N/A
2006	65.3 ± 6.6%	71.5 ± 6.2%	73.8 ± 6.0%	4	8	6
2007	68.5 ± 6.4%	73.9 ± 6.1%	75.6 ± 6.1%	6	6	8
2008	68.6 ± 6.7%	74.3 ± 6.2%	74.4 ± 6.2%	4	3	4
2009	71.0 ± 5.4%	75.2 ± 5.1%	76.6 ± 5.0%	5	5	6
2010	78.6 ± 5.2%	82.4 ± 4.9%	83.3 ± 4.9%	3	1	1
2011	77.8 ± 7.1%	81.1 ± 6.6%	83.3 ± 6.3%	1	5	3
2012	74.3 ± 6.1%	80.0 ± 5.7%	80.8 ± 5.6%	10	8	9
2013	82.1 ± 6.3%	87.5 ± 5.6%	88.0 ± 5.6%	1	1	1
2014	75.5 ± 8.5%	82.9 ± 7.7%	83.1 ± 7.7%	7	3	6
2015	71.8 ± 6.8%	75.3 ± 6.7%	83.1 ± 7.7%	12	18	22
2016	76.0 ± 6.9%	78.7 ± 6.8%	79.1 ± 6.8%	4	4	6
2017	82.0 ± 5.7%	84.1 ± 5.6%	84.1 ± 5.6%	1	1	1

*No data available 2003-2005

2017 U.S. NATIONAL AVERAGE

Day 1: 65.7 ± 1.6%
Day 2: 72.0 ± 1.6%
Day 3: 73.6 ± 1.6%

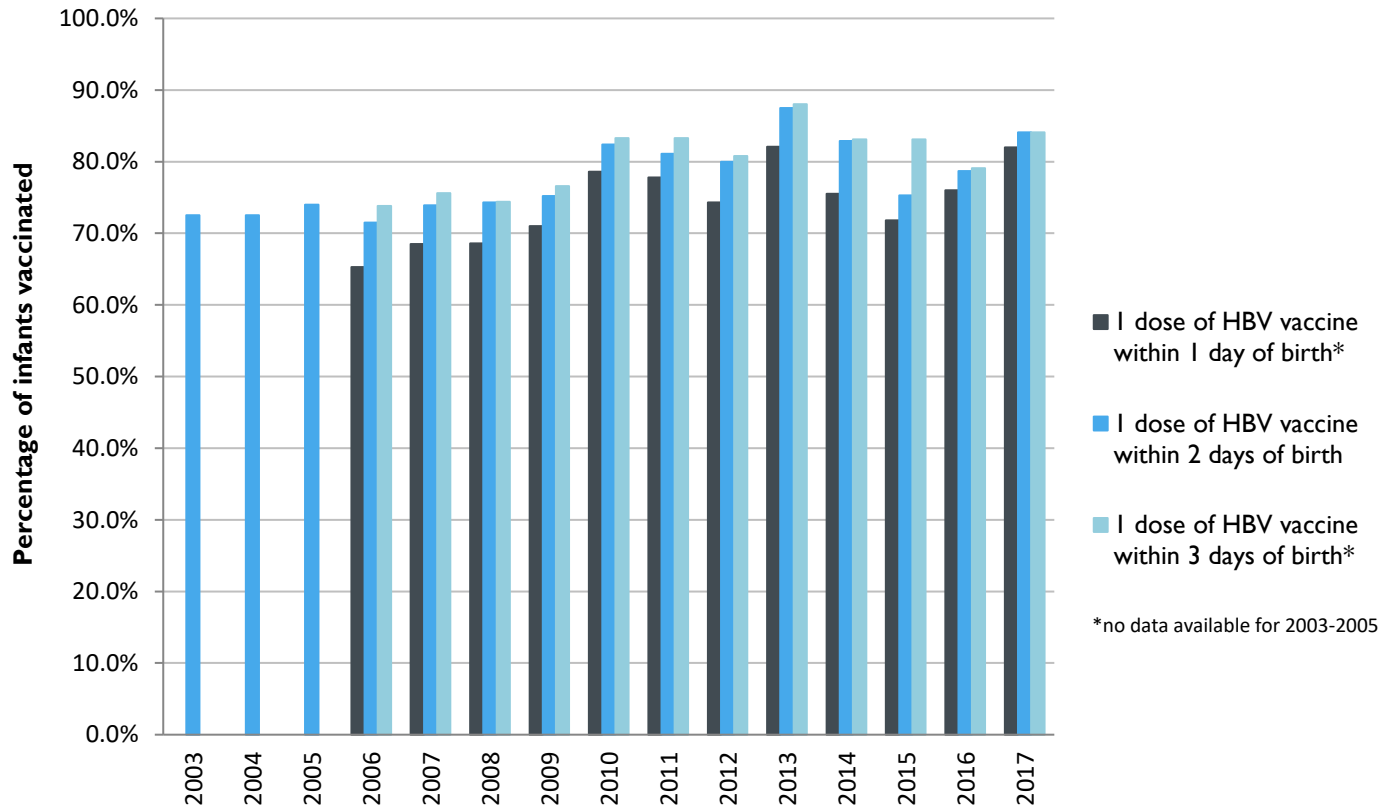
2017 HIGHEST BIRTH DOSE COVERAGE

Day 1: 82.0 ± 5.7% (Kentucky)
Day 2: 84.1 ± 5.6% (Kentucky)
Day 3: 84.1 ± 5.6% (Kentucky)

Data compiled by the ALC from National Immunization Surveys, 1995-2017¹,
<https://www.cdc.gov/vaccines/imz-managers/coverage/childvaxview/data-reports/hepb/index.html>

GRAPH:

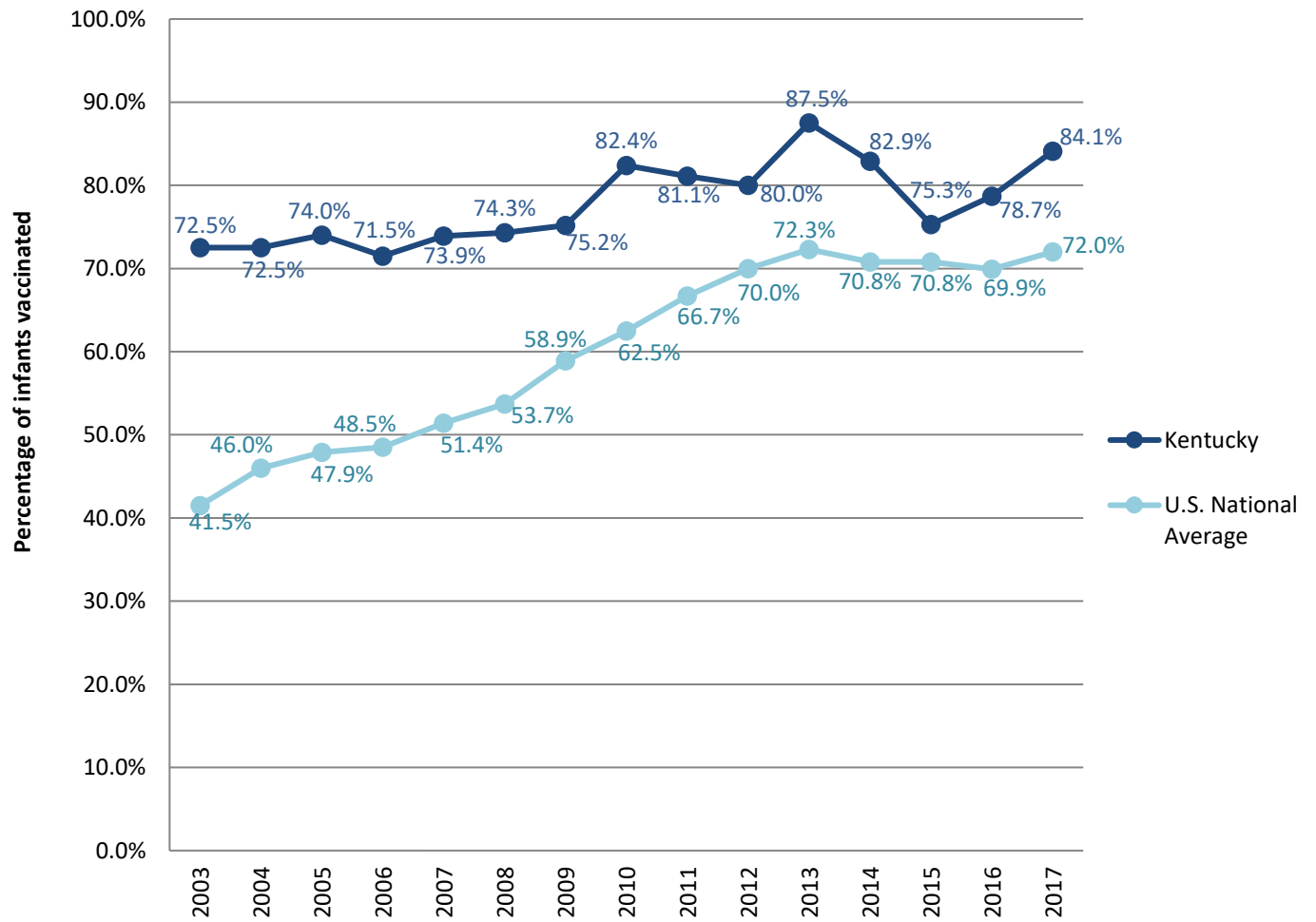
Estimated Vaccination Coverage for Hepatitis B Vaccine among Children from Birth to 3 Days of Age in Kentucky



Data compiled by the ALC from National Immunization Surveys, 1995-2017¹,
<https://www.cdc.gov/vaccines/imz-managers/coverage/childvaxview/data-reports/hepb/index.html>

GRAPH:

Percentage of Infants Receiving 1 Dose of Hepatitis B Vaccine within 2 Days of Birth



Data compiled by the ALC from National Immunization Surveys, 1995-2017¹, <https://www.cdc.gov/vaccines/imz-managers/coverage/childvaxview/data-reports/hepb/index.html>

¹ The data from the National Immunization Surveys constitute a composite of data from children who were 19-35 months of age at the time of the survey. Therefore, the data might reflect a different estimate from the states' own birth cohort data.