

PENNSYLVANIA

CONTACT THE STAFF

COORDINATOR:

Leisa Garner Spence, RN
Email: lgarnerspe@pa.gov
Phone: 717-787-5681
Fax: 717-214-7223

ADDRESS:

Division of Immunizations
Pennsylvania Department of Health
625 Forster Street
Harrisburg, PA 17120

PHILADELPHIA COORDINATOR:

Bruce Barlow, BSN
Email: bruce.barlow@phila.gov
Phone: 215-685-6853
Fax: 215-685-6806 C

ADDRESS:

Philadelphia Department of Public Health
Division of Disease Control
500 S. Broad Street
Philadelphia, PA 19146

SCREENING REQUIREMENTS

Does the jurisdiction require screening of pregnant women for hepatitis B infection or hepatitis B surface antigen (HBsAg)?

Yes - 28 Pa. Code § 27.99(a)

Does the jurisdiction specifically require reporting of positive HBsAg status in pregnant women?

No

COMPLETION OF HEPATITIS B VACCINATION SERIES

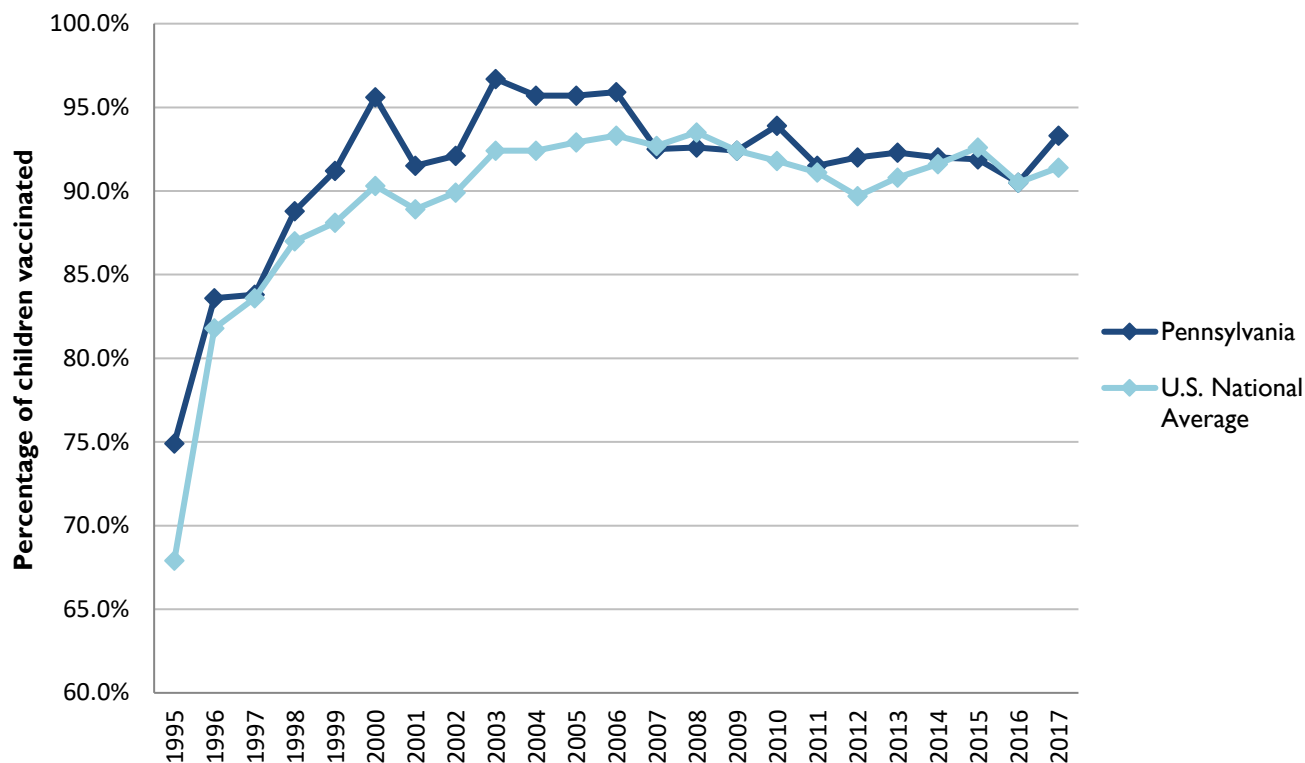
3 or more doses among children 19-35 months of age

	Percentage of children 19-35 months of age receiving 3 or more doses	Rank among other states	U.S. National Average	#1 ranked state and coverage
1995	74.9 ± 5.3%	10	67.9 ± 1.3%	88.5 ± 5.4% (South Carolina)
1996	83.6 ± 4.2%	20	81.8 ± 0.9%	95.8 ± 2.2% (South Carolina)
1997	83.8 ± 3.9%	28	83.6 ± 0.8%	91.6 ± 4.2% (New Jersey)
1998	88.8 ± 3.2%	20	87.0 ± 0.7%	94.1 ± 2.7% (South Carolina)
1999	91.2 ± 3.4%	12	88.1 ± 0.7%	94.0 ± 3.1% (Rhode Island)
2000	95.6 ± 2.1%	4	90.3 ± 0.6%	96.4 ± 1.9% (Rhode Island)
2001	91.5 ± 2.8%	8	88.9 ± 0.7%	95.8 ± 2.2% (Rhode Island)
2002	92.1 ± 4.1%	17	89.9 ± 0.7%	97.0 ± 2.0% (Rhode Island)
2003	96.7 ± 1.7%	3	92.4 ± 0.6%	98.2 ± 1.4% (Connecticut)
2004	95.7 ± 2.4%	3	92.4 ± 0.6%	96.8 ± 1.7% (Florida)
2005	95.7 ± 3.6%	5	92.9 ± 0.6%	97.9 ± 2.0% (Massachusetts)
2006	95.9 ± 1.7%	7	93.3 ± 0.6%	97.8 ± 1.6% (Rhode Island)
2007	92.5 ± 2.9%	30	92.7 ± 0.7%	98.6 ± 1.5% (New Hampshire)
2008	92.6 ± 3.6%	37	93.5 ± 0.7%	98.1 ± 1.6% (Connecticut)
2009	92.4 ± 3.4%	26	92.4 ± 0.7%	98.8 ± 1.5% (Rhode Island)
2010	93.9 ± 2.4%	16	91.8 ± 0.7%	98.3 ± 1.5% (North Dakota)
2011	91.5 ± 3.1%	23	91.1 ± 0.7%	97.1 ± 1.7% (Louisiana)
2012	92.0 ± 3.3%	15	89.7 ± 0.9%	96.3 ± 3.0% (Georgia)
2013	92.3 ± 3.4%	17	90.8 ± 1.0%	96.7 ± 2.3% (Rhode Island)
2014	92.0 ± 3.1%	28	91.6 ± 0.9%	97.6 ± 1.8% (Louisiana)
2015	91.9 ± 3.2%	31	92.6 ± 0.7%	97.3 ± 2.3% (Connecticut)
2016	90.5 ± 4.3%	29	90.5 ± 1.1%	97.4 ± 1.9% (Iowa)
2017	93.3 ± 4.1%	13	91.4 ± 0.9%	97.7 ± 1.6% (North Dakota)

Data compiled by the ALC from National Immunization Surveys, 1995-2017¹,
<https://www.cdc.gov/vaccines/imz-managers/coverage/childvaxview/data-reports/hepb/index.html>

GRAPH:

Percentage of Children 19-35 Months of Age Receiving 3 or More Doses of Hepatitis B Vaccine



Data compiled by the ALC from National Immunization Surveys, 1995-2017¹,
<https://www.cdc.gov/vaccines/imz-managers/coverage/childvaxview/data-reports/hepb/index.html>

HEPATITIS B BIRTH DOSE VACCINATION COVERAGE

1 or more dose among infants within 3 days of birth

	Percentage of infants receiving			Rank among other states according to		
	1 dose within 1 day of birth*	1 dose within 2 days of birth	1 dose within 3 days of birth*	1 dose within 1 day of birth	1 dose within 2 days of birth	1 dose within 3 days of birth
2003		46.6 ± 5.8%		N/A	27	N/A
2004		49.0 ± 6.3%		N/A	28	N/A
2005		54.8 ± 6.7%		N/A	24	N/A
2006	45.8 ± 5.6%	53.9 ± 5.7%	56.8 ± 5.7%	27	27	26
2007	51.9 ± 5.3%	58.7 ± 5.4%	62.0 ± 5.2%	26	27	26
2008	53.4 ± 5.7%	65.8 ± 5.5%	67.0 ± 5.5%	22	13	15
2009	54.3 ± 6.2%	66.5 ± 5.9%	69.1 ± 5.8%	26	18	16
2010	59.3 ± 5.6%	69.8 ± 5.4%	71.5 ± 5.4%	25	14	15
2011	62.5 ± 5.4%	70.5 ± 5.1%	72.8 ± 5.0%	29	24	23
2012	70.6 ± 5.5%	82.1 ± 4.4%	83.2 ± 4.3%	14	2	3
2013	72.9 ± 5.1%	82.5 ± 4.4%	83.3 ± 4.3%	15	2	3
2014	67.3 ± 5.7%	77.4 ± 5.1%	78.7 ± 5.0%	27	19	18
2015	66.1 ± 6.3%	71.3 ± 6.0%	73.2 ± 6.0%	26	27	27
2016	68.3 ± 5.9%	76.5 ± 5.5%	76.9 ± 5.5%	19	9	10
2017	70.0 ± 6.8%	77.2 ± 6.4%	78.9 ± 6.15	21	15	12

*No data available 2003-2005

2017 U.S. NATIONAL AVERAGE

Day 1: 65.7 ± 1.6%
Day 2: 72.0 ± 1.6%
Day 3: 73.6 ± 1.6%

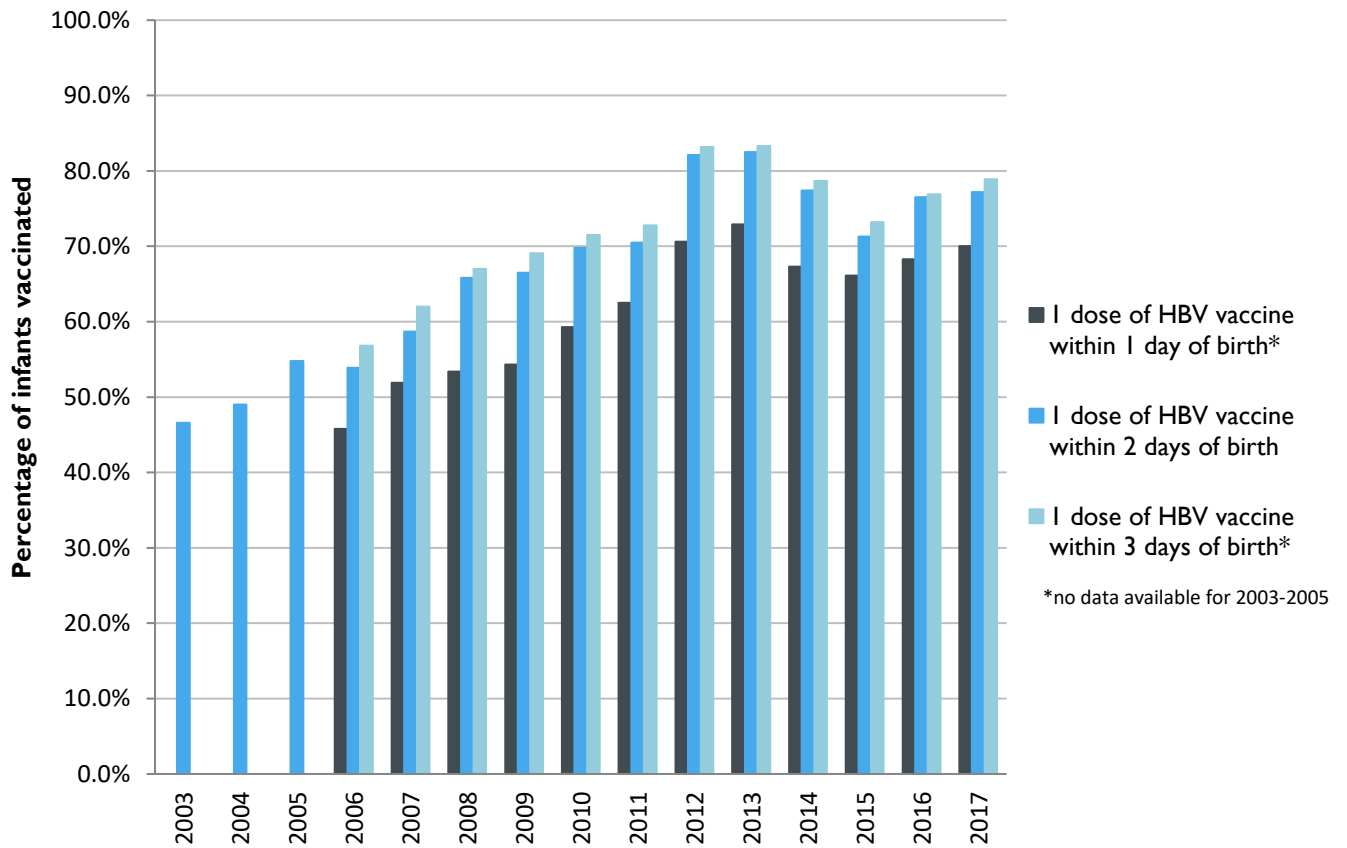
2017 HIGHEST BIRTH DOSE COVERAGE

Day 1: 82.0 ± 5.7% (Kentucky)
Day 2: 84.1 ± 5.6% (Kentucky)
Day 3: 84.1 ± 5.6% (Kentucky)

Data compiled by the ALC from National Immunization Surveys, 1995-2017¹,
<https://www.cdc.gov/vaccines/imz-managers/coverage/childvaxview/data-reports/hepb/index.html>

GRAPH:

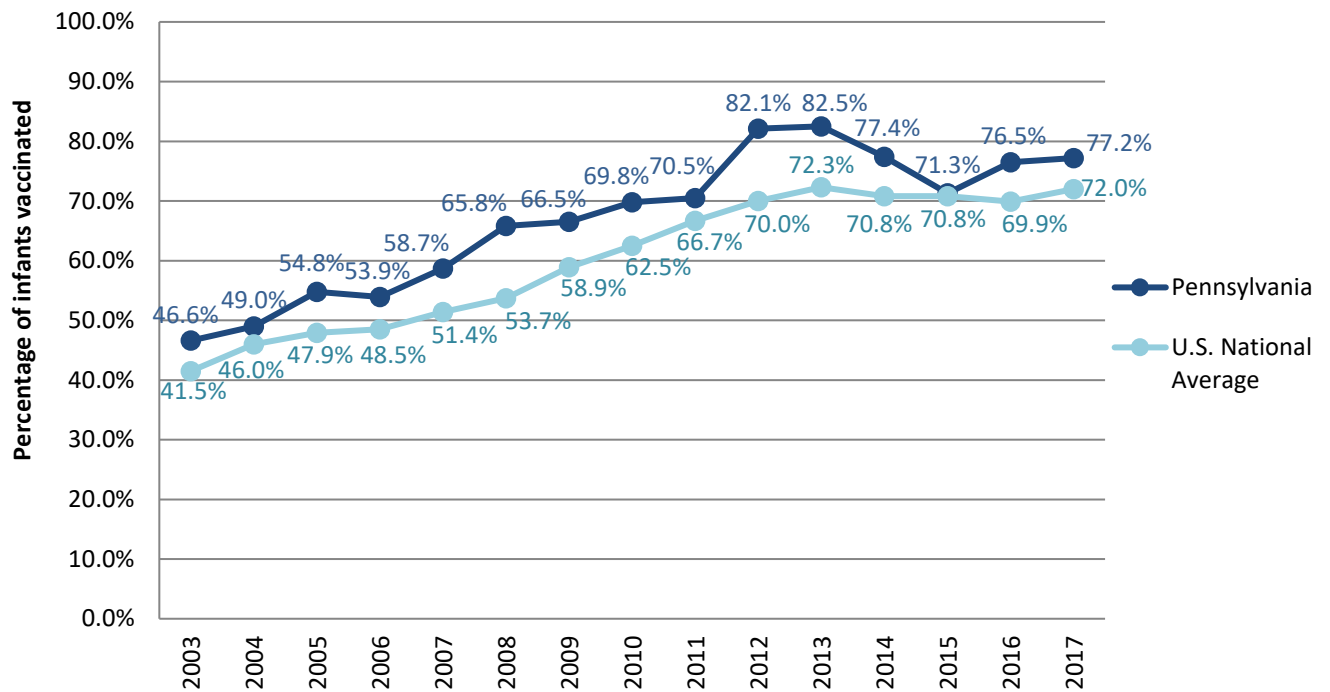
Estimated Vaccination Coverage for Hepatitis B Vaccine among Children from Birth to 3 Days of Age in Pennsylvania



Data compiled by the ALC from National Immunization Surveys, 1995-2017¹,
<https://www.cdc.gov/vaccines/imz-managers/coverage/childvaxview/data-reports/hepb/index.html>

GRAPH:

Percentage of Infants Receiving 1 Dose of Hepatitis B Vaccine within 2 Days of Birth



Data compiled by the ALC from National Immunization Surveys, 1995-2017¹,
<https://www.cdc.gov/vaccines/imz-managers/coverage/childvaxview/data-reports/hepb/index.html>

¹ The data from the National Immunization Surveys constitute a composite of data from children who were 19-35 months of age at the time of the survey. Therefore, the data might reflect a different estimate from the states' own birth cohort data.