

OKLAHOMA

CONTACT THE STAFF

COORDINATOR:

Jennifer Bumgarner, RN, BSN
Email: JenniferJB@health.ok.gov
Phone: 405-271-4636
Fax: 405-271-5149

ADDRESS:

Oklahoma State Department of Health
HIV/STD Services
1000 NE 10th Street
Oklahoma City, OK 73117-1299

SCREENING REQUIREMENTS

Does the jurisdiction require screening of pregnant women for hepatitis B infection or hepatitis B surface antigen (HBsAg)?

Yes - Okla. Admin. Code § 317:30-5-176

Does the jurisdiction specifically require reporting of positive HBsAg status in pregnant women?

Yes – OAC § 310: 515-1-3

COMPLETION OF HEPATITIS B VACCINATION SERIES

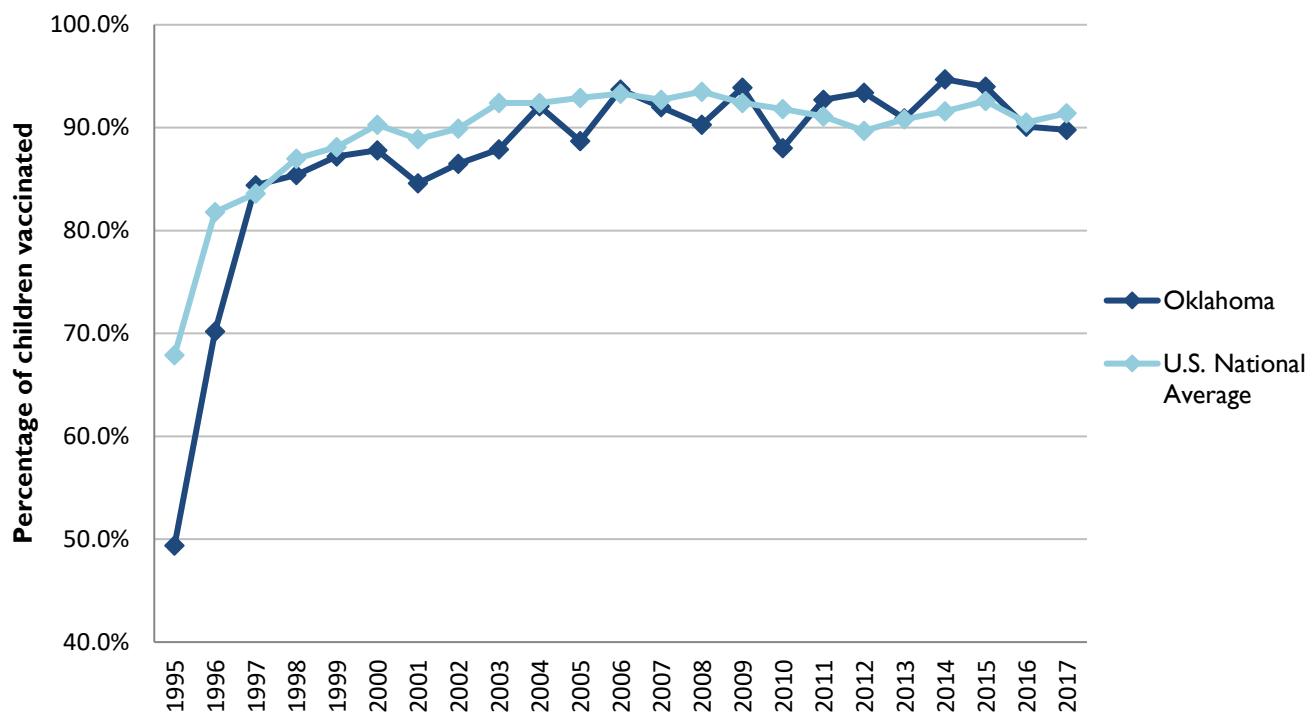
3 or more doses among children 19-35 months of age

	Percentage of children 19-35 months of age receiving 3 or more doses	Rank among other states	U.S. National Average	#1 ranked state and coverage
1995	49.4 ± 7.5%	44	67.9 ± 1.3%	88.5 ± 5.4% (South Carolina)
1996	70.2 ± 7.0%	47	81.8 ± 0.9%	95.8 ± 2.2% (South Carolina)
1997	84.4 ± 4.6%	27	83.6 ± 0.8%	91.6 ± 4.2% (New Jersey)
1998	85.4 ± 5.2%	35	87.0 ± 0.7%	94.1 ± 2.7% (South Carolina)
1999	87.2 ± 4.4%	35	88.1 ± 0.7%	94.0 ± 3.1% (Rhode Island)
2000	87.8 ± 4.6%	41	90.3 ± 0.6%	96.4 ± 1.9% (Rhode Island)
2001	84.6 ± 4.7%	45	88.9 ± 0.7%	95.8 ± 2.2% (Rhode Island)
2002	86.5 ± 5.4%	45	89.9 ± 0.7%	97.0 ± 2.0% (Rhode Island)
2003	87.9 ± 5.7%	49	92.4 ± 0.6%	98.2 ± 1.4% (Connecticut)
2004	92.1 ± 3.7%	32	92.4 ± 0.6%	96.8 ± 1.7% (Florida)
2005	88.7 ± 4.5%	43	92.9 ± 0.6%	97.9 ± 2.0% (Massachusetts)
2006	93.7 ± 3.3%	21	93.3 ± 0.6%	97.8 ± 1.6% (Rhode Island)
2007	92.0 ± 4.0%	36	92.7 ± 0.7%	98.6 ± 1.5% (New Hampshire)
2008	90.3 ± 4.9%	48	93.5 ± 0.7%	98.1 ± 1.6% (Connecticut)
2009	93.9 ± 3.3%	21	92.4 ± 0.7%	98.8 ± 1.5% (Rhode Island)
2010	88.0 ± 4.6%	46	91.8 ± 0.7%	98.3 ± 1.5% (North Dakota)
2011	92.7 ± 3.7%	14	91.1 ± 0.7%	97.1 ± 1.7% (Louisiana)
2012	93.4 ± 3.2%	7	89.7 ± 0.9%	96.3 ± 3.0% (Georgia)
2013	90.9 ± 3.5%	26	90.8 ± 1.0%	96.7 ± 2.3% (Rhode Island)
2014	94.7 ± 4.2%	11	91.6 ± 0.9%	97.6 ± 1.8% (Louisiana)
2015	94.0 ± 4.2%	15	92.6 ± 0.7%	97.3 ± 2.3% (Connecticut)
2016	90.1 ± 4.9%	34	90.5 ± 1.1%	97.4 ± 1.9% (Iowa)
2017	89.8 ± 4.9%	40	91.4 ± 0.9%	97.7 ± 1.6% (North Dakota)

Data compiled by the ALC from National Immunization Surveys, 1995-2017¹,
<https://www.cdc.gov/vaccines/imz-managers/coverage/childvaxview/data-reports/hepb/index.html>

GRAPH:

Percentage of Children 19-35 Months of Age Receiving 3 or More Doses of Hepatitis B Vaccine



Data compiled by the ALC from National Immunization Surveys, 1995-2017¹,
<https://www.cdc.gov/vaccines/imz-managers/coverage/childvaxview/data-reports/hepb/index.html>

HEPATITIS B BIRTH DOSE VACCINATION COVERAGE

1 or more dose among infants within 3 days of birth

	Percentage of infants receiving			Rank among other states according to		
	1 dose within 1 day of birth*	1 dose within 2 days of birth	1 dose within 3 days of birth*	1 dose within 1 day of birth	1 dose within 2 days of birth	1 dose within 3 days of birth
2003		29.7 ± 6.8%		N/A	38	N/A
2004		40.8 ± 7.0%		N/A	33	N/A
2005		42.3 ± 6.7%		N/A	35	N/A
2006	41.6 ± 7.2%	49.5 ± 7.0%	50.2 ± 7.0%	32	34	34
2007	52.6 ± 7.5%	56.3 ± 7.5%	57.4 ± 7.4%	24	31	31
2008	54.4 ± 7.0%	60.3 ± 6.8%	61.4 ± 6.8%	21	29	32
2009	58.1 ± 6.8%	65.3 ± 6.3%	66.0 ± 6.3%	22	20	22
2010	60.2 ± 6.3%	64.9 ± 6.1%	66.4 ± 6.0%	23	24	29
2011	62.9 ± 7.2%	68.7 ± 6.9%	70.9 ± 6.8%	25	29	28
2012	63.2 ± 7.5%	67.0 ± 7.4%	67.4 ± 7.4%	29	38	40
2013	70.5 ± 5.8%	75.9 ± 5.5%	76.7 ± 5.4%	19	22	23
2014	69.1 ± 7.7%	70.7 ± 7.7%	72.1 ± 7.6%	24	37	38
2015	74.1 ± 6.7%	78.8 ± 6.1%	80.4 ± 5.9%	7	10	8
2016	71.6 ± 7.4%	73.5 ± 7.1%	73.5 ± 7.1%	9	24	18
2017	75.8 ± 6.9%	77.9 ± 6.7%	78.8 ± 6.7%	6	11	13

*No data available 2003-2005

2017 U.S. NATIONAL AVERAGE

Day 1: 65.7 ± 1.6%
Day 2: 72.0 ± 1.6%
Day 3: 73.6 ± 1.6%

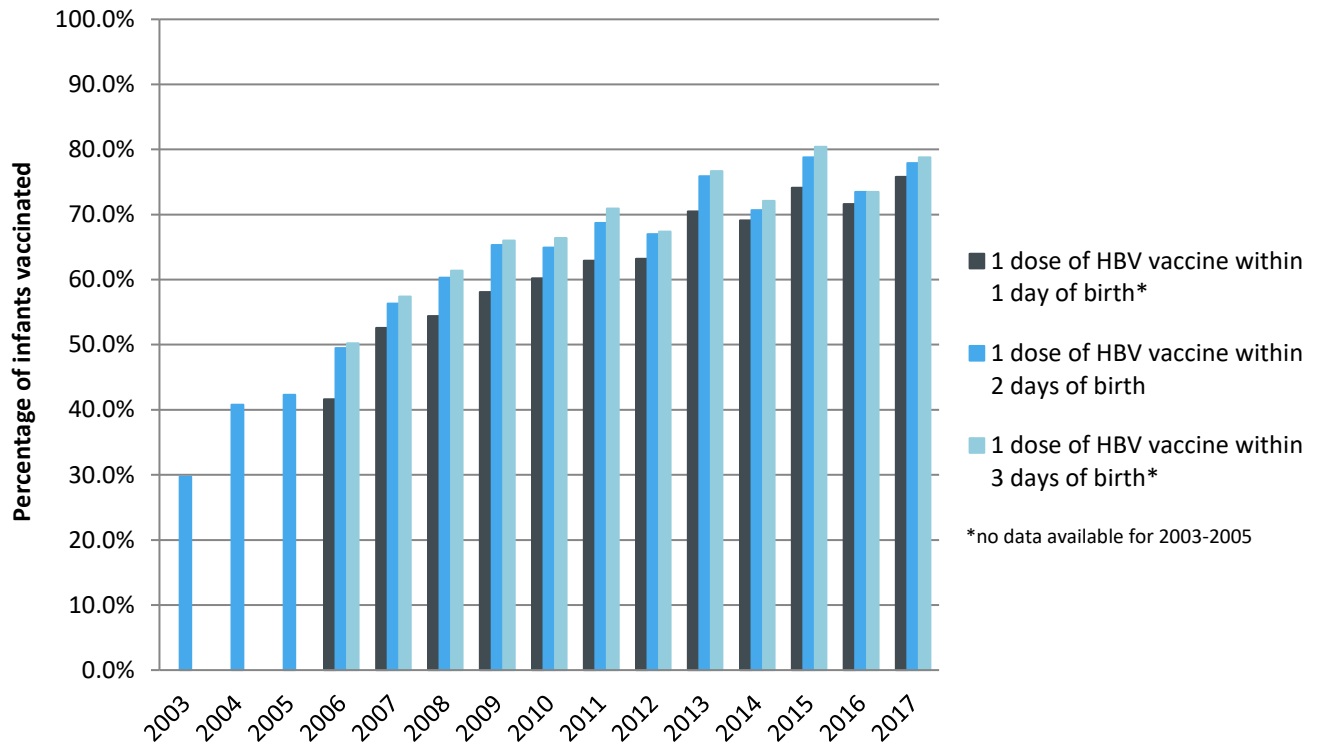
2017 HIGHEST BIRTH DOSE COVERAGE

Day 1: 82.0 ± 5.7% (Kentucky)
Day 2: 84.1 ± 5.6% (Kentucky)
Day 3: 84.1 ± 5.6% (Kentucky)

Data compiled by the ALC from National Immunization Surveys, 1995-2017¹,
<https://www.cdc.gov/vaccines/imz-managers/coverage/childvaxview/data-reports/hepb/index.html>

GRAPH:

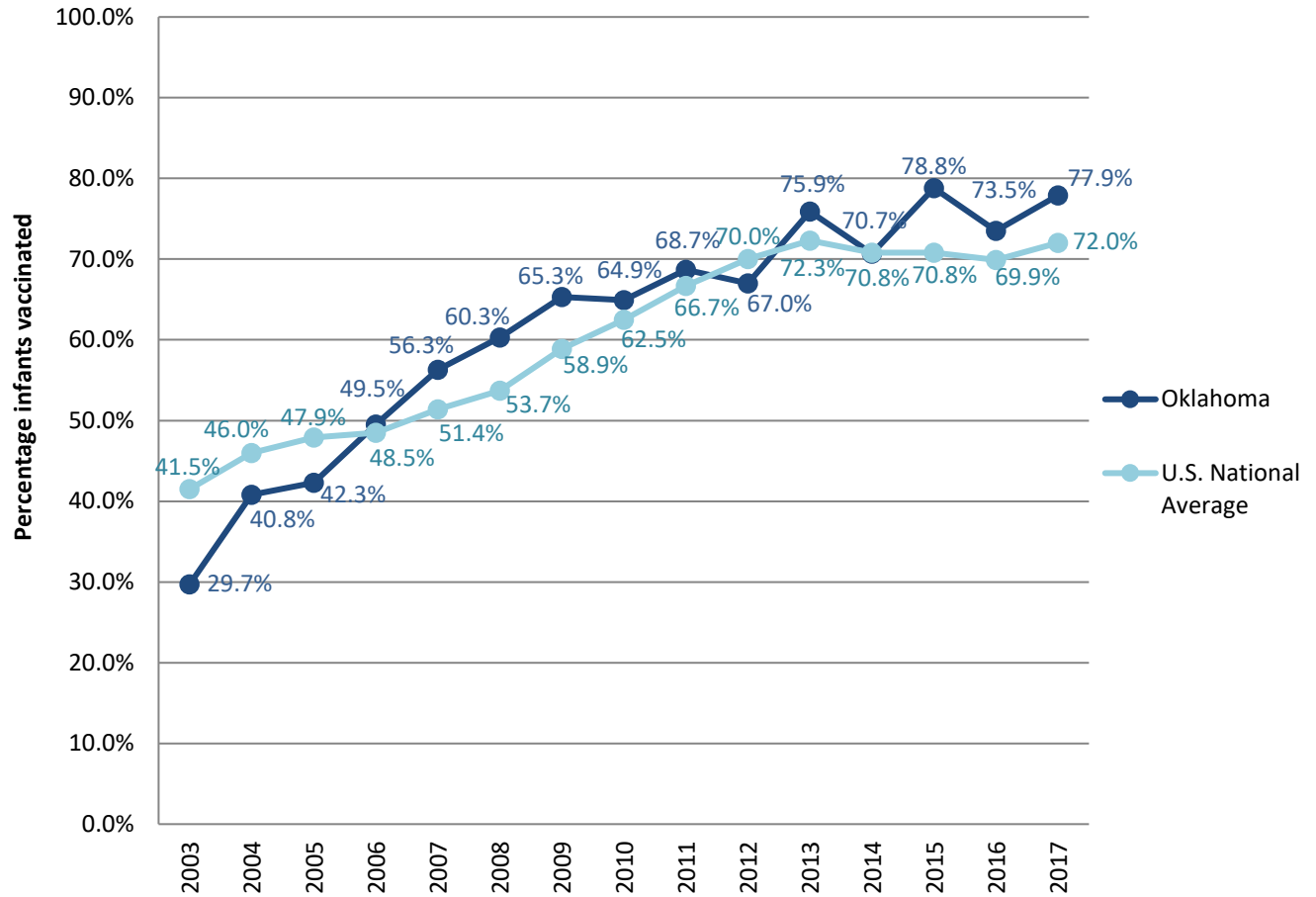
Estimated Vaccination Coverage for Hepatitis B Vaccine among Children from Birth to 3 Days of Age in Oklahoma



Data compiled by the ALC from National Immunization Surveys, 1995-2017¹,
<https://www.cdc.gov/vaccines/imz-managers/coverage/childvaxview/data-reports/hepb/index.html>

GRAPH:

Percentage of Infants Receiving 1 Dose of Hepatitis B Vaccine within 2 Days of Birth



Data compiled by the ALC from National Immunization Surveys, 1995-2017¹,
<https://www.cdc.gov/vaccines/imz-managers/coverage/childvaxview/data-reports/hepb/index.html>

¹ The data from the National Immunization Surveys constitute a composite of data from children who were 19-35 months of age at the time of the survey. Therefore, the data might reflect a different estimate from the states' own birth cohort data.