

# MICHIGAN

---

## CONTACT THE STAFF

### STATE COORDINATOR:

Pat Fineis  
Email: [fineisp@michigan.gov](mailto:fineisp@michigan.gov)  
Phone: 517-335-9443 or 800-964-4487  
Fax: 517-335-9855 C

### STATE CASE MANAGEMENT:

Marcy Smith  
Email: [smithm7@michigan.gov](mailto:smithm7@michigan.gov)  
Phone: 517-284-4893  
Fax: 517-335-9855 C

### SECONDARY CONTACT:

Rachel Wilkins  
Email: [Wilkinsr3@michigan.gov](mailto:Wilkinsr3@michigan.gov)  
Phone: 517-284-4885  
Fax: 517-335-9855

### STATE ADDRESS:

Michigan Department of Health and Human  
Services  
Immunization Division  
333 S. Grand Ave  
PO Box 30195  
Lansing, MI 48909

---

## SCREENING REQUIREMENTS

Does the jurisdiction require screening of pregnant women for hepatitis B infection or hepatitis B surface antigen (HBsAg)?

**Yes** - Mich. Comp. Laws § 333.5123

Does the jurisdiction specifically require reporting of positive HBsAg status in pregnant women?

**Yes** - Mich. Admin. Code r. 325.172 and Mich. Admin. Code r. 325.173

---

## COMPLETION OF HEPATITIS B VACCINATION SERIES

3 or more doses among children 19-35 months of age

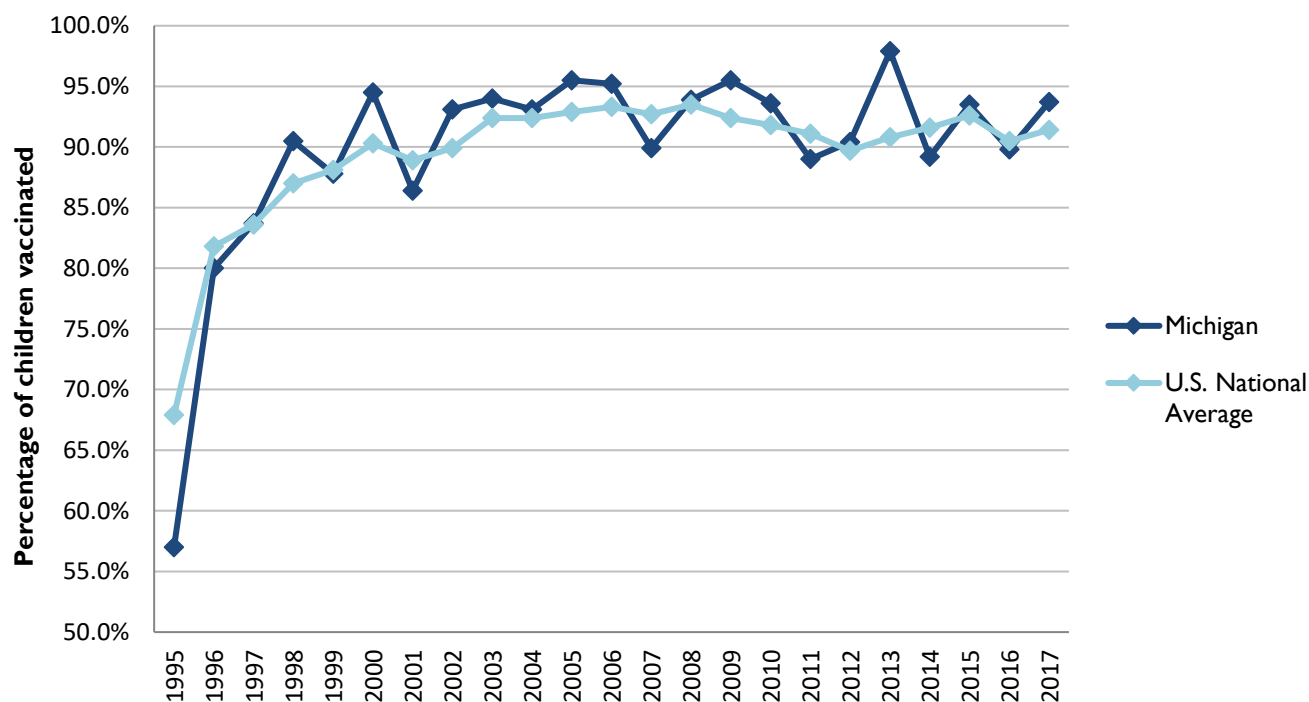
	Percentage of children 19-35 months of age receiving 3 or more doses	Rank among other states	U.S. National Average	#1 ranked state and coverage
1995	57.0 ± 6.7%	39	67.9 ± 1.3%	88.5 ± 5.4% (South Carolina)
1996	80.0 ± 4.4%	30	81.8 ± 0.9%	95.8 ± 2.2% (South Carolina)
1997	83.7 ± 3.9%	30	83.6 ± 0.8%	91.6 ± 4.2% (New Jersey)
1998	90.5 ± 3.0%	5	87.0 ± 0.7%	94.1 ± 2.7% (South Carolina)
1999	87.8 ± 3.8%	31	88.1 ± 0.7%	94.0 ± 3.1% (Rhode Island)
2000	94.5 ± 2.3%	7	90.3 ± 0.6%	96.4 ± 1.9% (Rhode Island)
2001	86.4 ± 3.9%	39	88.9 ± 0.7%	95.8 ± 2.2% (Rhode Island)
2002	93.1 ± 2.4%	9	89.9 ± 0.7%	97.0 ± 2.0% (Rhode Island)
2003	94.0 ± 2.7%	15	92.4 ± 0.6%	98.2 ± 1.4% (Connecticut)
2004	93.1 ± 3.6%	27	92.4 ± 0.6%	96.8 ± 1.7% (Florida)
2005	95.5 ± 2.3%	6	92.9 ± 0.6%	97.9 ± 2.0% (Massachusetts)
2006	95.2 ± 2.7%	15	93.3 ± 0.6%	97.8 ± 1.6% (Rhode Island)

2007	89.9 ± 5.3%	45	92.7 ± 0.7%	98.6 ± 1.5% (New Hampshire)
2008	93.9 ± 3.0%	22	93.5 ± 0.7%	98.1 ± 1.6% (Connecticut)
2009	95.5 ± 2.4%	8	92.4 ± 0.7%	98.8 ± 1.5% (Rhode Island)
2010	93.6 ± 3.1%	22	91.8 ± 0.7%	98.3 ± 1.5% (North Dakota)
2011	89.0 ± 5.8%	39	91.1 ± 0.7 %	97.1 ± 1.7% (Louisiana)
2012	90.4 ± 4.3%	22	89.7 ± 0.9%	96.3 ± 3.0% (Georgia)
2013	97.9 ± 5.2%	46	90.8 ± 1.0%	96.7 ± 2.3% (Rhode Island)
2014	89.2 ± 5.1%	42	91.6 ± 0.9%	97.6 ± 1.8% (Louisiana)
2015	93.5 ± 3.8%	22	92.6 ± 0.7%	97.3 ± 2.3% (Connecticut)
2016	89.8 ± 6.0%	36	90.5 ± 1.1%	97.4 ± 1.9% (Iowa)
2017	93.7 ± 3.6%	11	91.4 ± 0.9%	97.7 ± 1.6% (North Dakota)

Data compiled by the ALC from National Immunization Surveys, 1995-2017<sup>1</sup>,  
<https://www.cdc.gov/vaccines/imz-managers/coverage/childvaxview/data-reports/hepb/index.html>

## GRAPH:

Percentage of Children 19-35 Months of Age Receiving 3 or More Doses of Hepatitis B Vaccine



Data compiled by the ALC from National Immunization Surveys, 1995-2017<sup>1</sup>,  
<https://www.cdc.gov/vaccines/imz-managers/coverage/childvaxview/data-reports/hepb/index.html>

## HEPATITIS B BIRTH DOSE VACCINATION COVERAGE

1 or more dose among infants within 3 days of birth

Percentage of infants receiving	Rank among other states according to
---------------------------------	--------------------------------------

	1 dose within 1 day of birth*	1 dose within 2 days of birth	1 dose within 3 days of birth*	1 dose within 1 day of birth	1 dose within 2 days of birth	1 dose within 3 days of birth
2003		61.8 ± 5.9%		N/A	12	N/A
2004		72.0 ± 5.6%		N/A	6	N/A
2005		80.0 ± 4.9%		N/A	3	N/A
2006	66.5 ± 5.9%	78.2 ± 5.0%	79.5 ± 4.9%	3	3	3
2007	68.8 ± 7.0%	77.2 ± 6.4%	78.3 ± 6.3%	5	3	2
2008	67.4 ± 6.8%	74.1 ± 6.3%	75.7 ± 6.2%	5	4	3
2009	72.0 ± 6.8%	78.6 ± 6.2%	80.7 ± 6.1%	3	1	1
2010	74.0 ± 6.1%	79.2 ± 5.7%	80.3 ± 5.6%	6	5	4
2011	70.3 ± 7.8%	78.2 ± 6.7%	79.7 ± 6.7%	12	8	8
2012	69.3 ± 6.8%	78.3 ± 6.2%	78.9 ± 6.1%	16	10	11
2013	74.0 ± 6.7%	79.3 ± 6.4%	82.5 ± 6.1%	11	12	5
2014	68.7 ± 7.7%	75.5 ± 7.2%	78.0 ± 7.0%	25	23	20
2015	76.8 ± 6.5%	80.1 ± 6.1%	68.9 ± 7.0%	4	5	37
2016	69.8 ± 6.4%	77.4 ± 5.8%	79.7 ± 5.6%	16	6	4
2017	73.5 ± 6.5%	79.5 ± 6.0%	81.2 ± 5.7%	14	8	5

\*No data available 2003-2005

#### 2017 U.S. NATIONAL AVERAGE

Day 1: 65.7 ± 1.6%

Day 2: 72.0 ± 1.6%

Day 3: 73.6 ± 1.6%

#### 2017 HIGHEST BIRTH DOSE COVERAGE

Day 1: 82.0 ± 5.7% (Kentucky)

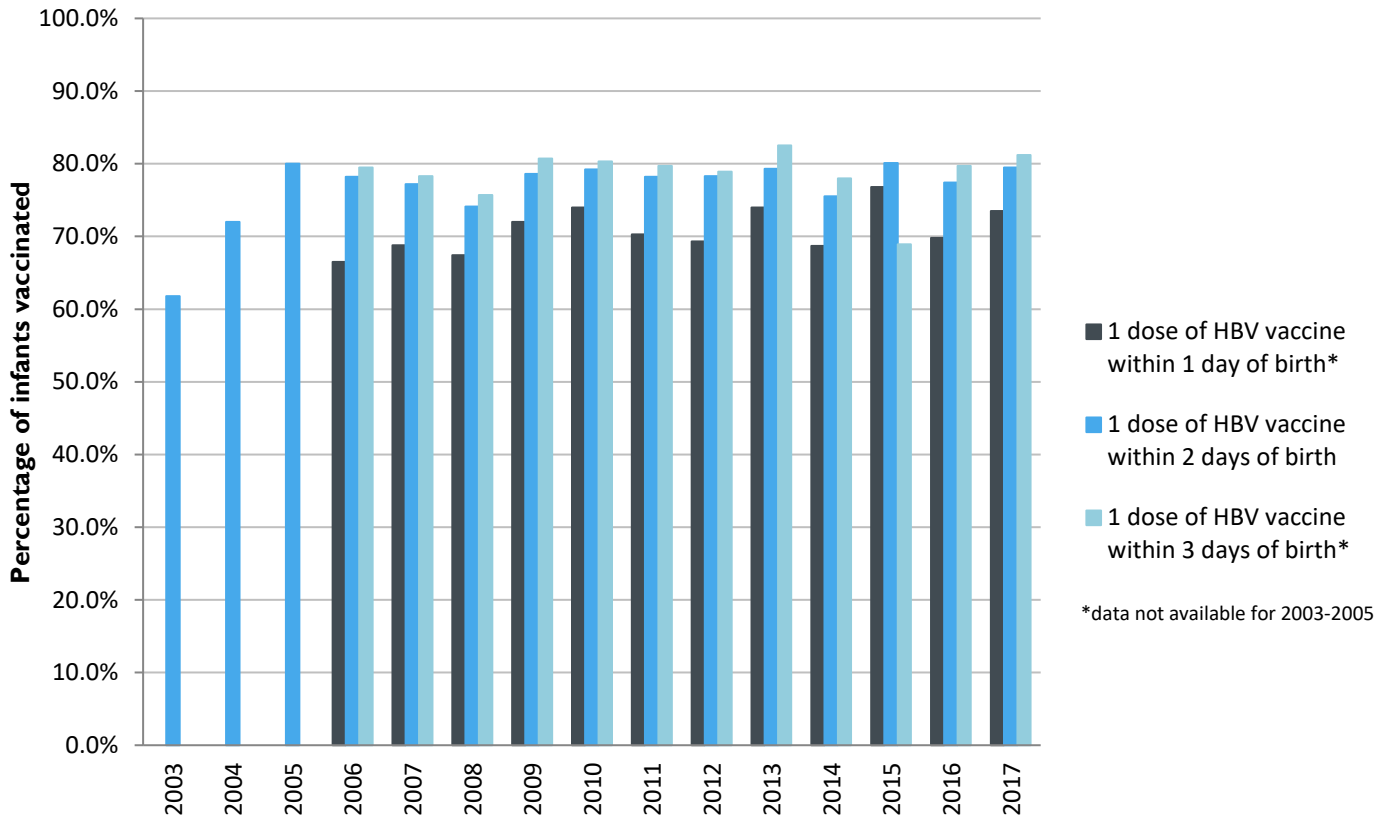
Day 2: 84.1 ± 5.6% (Kentucky)

Day 3: 84.1 ± 5.6% (Kentucky)

Data compiled by the ALC from National Immunization Surveys, 1995-2017<sup>1</sup>, <https://www.cdc.gov/vaccines/imz-managers/coverage/childvaxview/data-reports/hepb/index.html>

GRAPH:

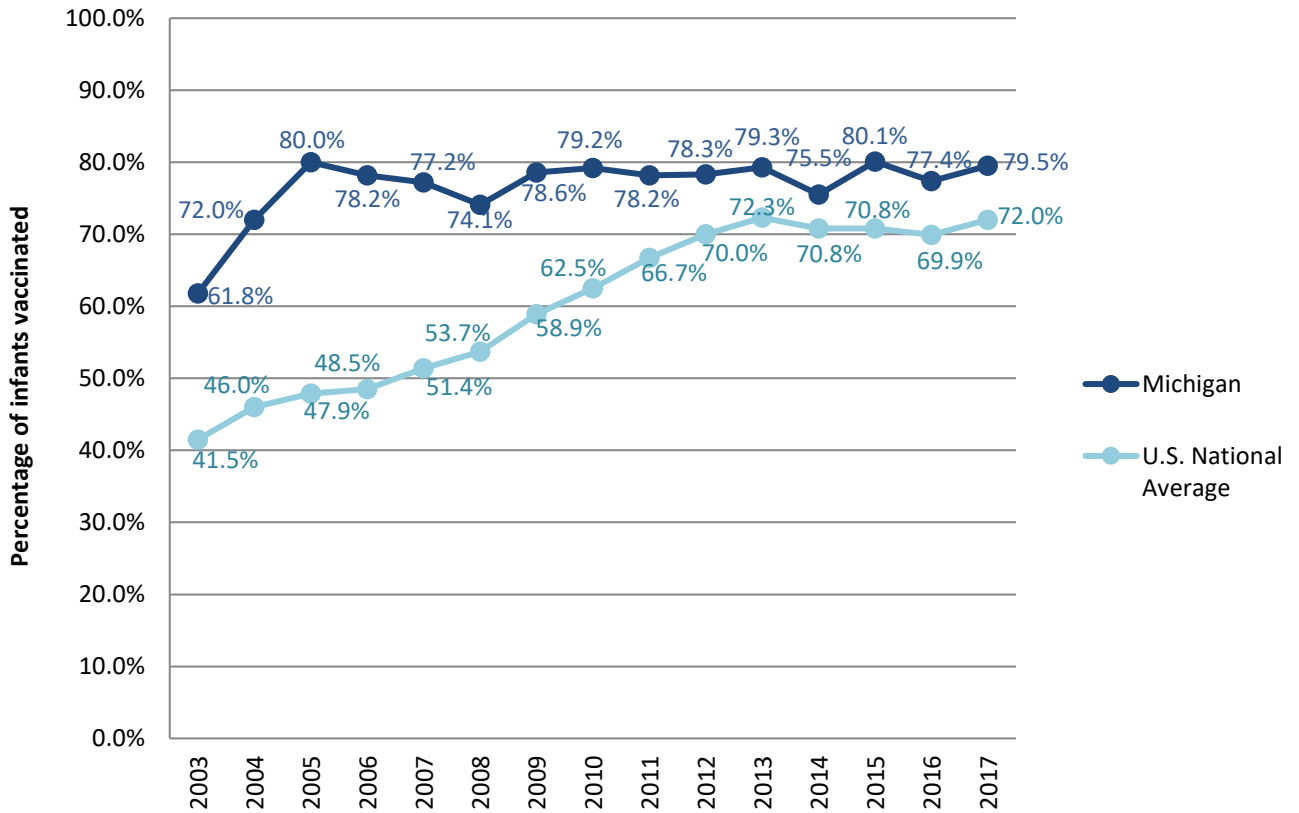
## Estimated Vaccination Coverage for Hepatitis B Vaccine among Children from Birth to 3 Days of Age in Michigan



Data compiled by the ALC from National Immunization Surveys, 1995-2017<sup>1</sup>, <https://www.cdc.gov/vaccines/imz-managers/coverage/childvaxview/data-reports/hepb/index.html>

GRAPH:

## Percentage of Infants Receiving 1 Dose of Hepatitis B Vaccine within 2 Days of Birth



Data compiled by the ALC from National Immunization Surveys, 1995-2017<sup>1</sup>, <https://www.cdc.gov/vaccines/imz-managers/coverage/childvaxview/data-reports/hepb/index.html>

<sup>1</sup> The data from the National Immunization Surveys constitute a composite of data from children who were 19-35 months of age at the time of the survey. Therefore, the data might reflect a different estimate from the states' own birth cohort data.