

ARIZONA

CONTACT THE STAFF

COORDINATOR:

Susan Goodykoontz
Email: goodyks@azdhs.gov
Phone: 480-364-4043
Fax: 602-364-3199

ADDRESS:

Office of Infectious Disease Services
Arizona Department of Health Services
150 North 18th Avenue, Suite 120
Phoenix, Arizona 85007

SCREENING REQUIREMENTS

Does the jurisdiction require screening of pregnant women for hepatitis B infection or hepatitis B surface antigen (HBsAg)?

No

Does the jurisdiction specifically require reporting of positive HBsAg status in pregnant women?

No

COMPLETION OF HEPATITIS B VACCINATION SERIES

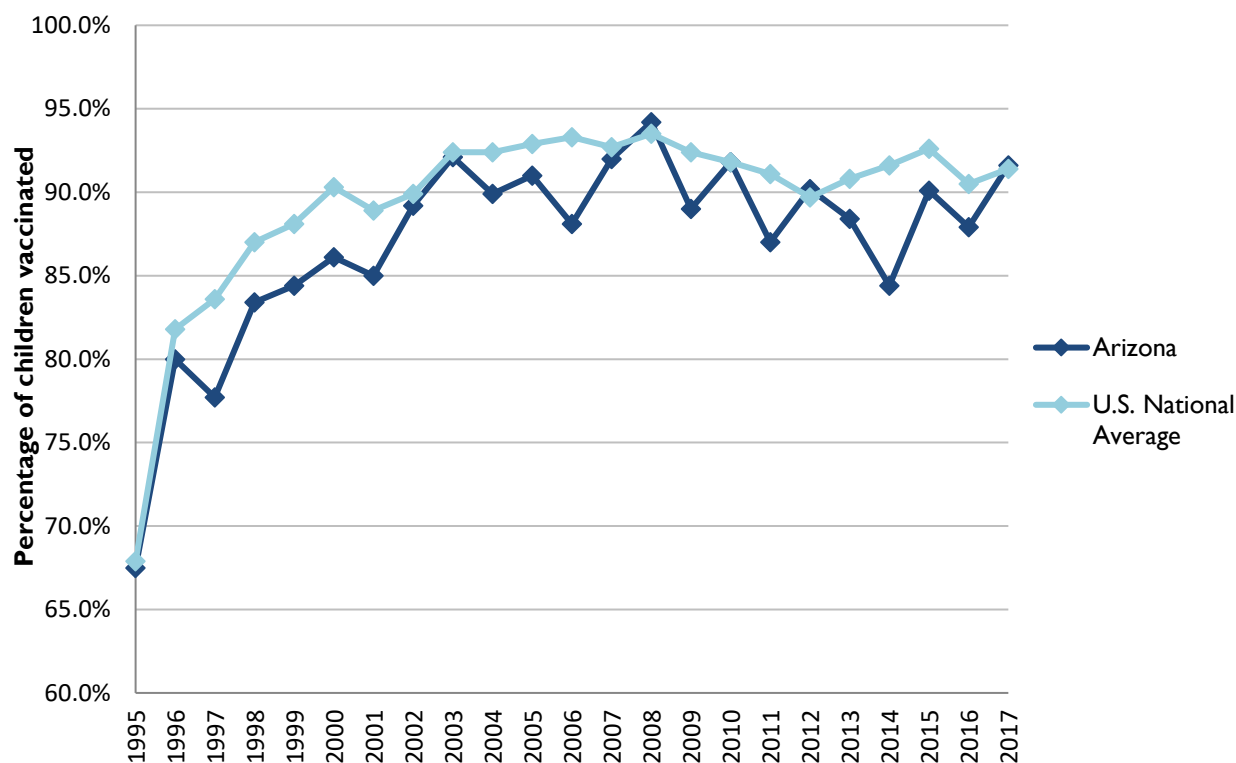
3 or more doses among children 19-35 months of age

	Percentage of children 19-35 months of age receiving 3 or more doses	Rank among other states	U.S. National Average	#1 ranked state and coverage
1995	67.5 ± 5.8%	21	67.9 ± 1.3%	88.5 ± 5.4% (South Carolina)
1996	80.0 ± 4.1%	31	81.8 ± 0.9%	95.8 ± 2.2% (South Carolina)
1997	77.7 ± 4.0%	49	83.6 ± 0.8%	91.6 ± 4.2% (New Jersey)
1998	83.4 ± 3.7%	44	87.0 ± 0.7%	94.1 ± 2.7% (South Carolina)
1999	84.4 ± 3.8%	44	88.1 ± 0.7%	94.0 ± 3.1% (Rhode Island)
2000	86.1 ± 3.4%	44	90.3 ± 0.6%	96.4 ± 1.9% (Rhode Island)
2001	85.0 ± 3.3%	44	88.9 ± 0.7%	95.8 ± 2.2% (Rhode Island)
2002	89.2 ± 3.3%	36	89.9 ± 0.7%	97.0 ± 2.0% (Rhode Island)
2003	92.1 ± 2.5%	28	92.4 ± 0.6%	98.2 ± 1.4% (Connecticut)
2004	89.9 ± 3.2%	44	92.4 ± 0.6%	96.8 ± 1.7% (Florida)
2005	91.0 ± 3.2%	38	92.9 ± 0.6%	97.9 ± 2.0% (Massachusetts)
2006	88.1 ± 3.5%	49	93.3 ± 0.6%	97.8 ± 1.6% (Rhode Island)
2007	92.0 ± 3.9%	37	92.7 ± 0.7%	98.6 ± 1.5% (New Hampshire)
2008	94.2 ± 3.0%	21	93.5 ± 0.7%	98.1 ± 1.6% (Connecticut)
2009	89.0 ± 4.3%	42	92.4 ± 0.7%	98.8 ± 1.5% (Rhode Island)
2010	91.8 ± 3.7%	27	91.8 ± 1.5%	98.3 ± 1.5% (North Dakota)
2011	87.0 ± 6.0%	45	91.1 ± 0.7%	97.1 ± 1.7% (Louisiana)
2012	90.5 ± 4.1%	21	89.7 ± 0.9%	96.3 ± 3.0% (Georgia)
2013	88.4 ± 4.6%	41	90.8 ± 1.0%	96.7 ± 2.3% (Rhode Island)
2014	84.4 ± 6.2%	49	91.6 ± 0.9%	97.6 ± 1.8% (Louisiana)
2015	90.1 ± 4.2%	46	92.6 ± 0.7%	97.3 ± 2.3% (Connecticut)
2016	87.9 ± 5.7%	46	90.5 ± 1.1%	97.4 ± 1.9% (Iowa)
2017	91.6 ± 3.5%	28	91.4 ± 0.9%	97.7 ± 1.6% (North Dakota)

Data compiled by the ALC from National Immunization Surveys, 1995-2017¹,
<https://www.cdc.gov/vaccines/imz-managers/coverage/childvaxview/data-reports/hepb/index.html>

GRAPH:

Percentage of Children 19-35 Months of Age Receiving 3 or More Doses of Hepatitis B Vaccine



Data compiled by the ALC from National Immunization Surveys, 1995-2017¹,
<https://www.cdc.gov/vaccines/imz-managers/coverage/childvaxview/data-reports/hepb/index.html>

HEPATITIS B BIRTH DOSE VACCINATION COVERAGE

1 or more dose among infants within 3 days of birth

	Percentage of infants receiving			Rank among other states according to		
	1 dose within 1 day of birth*	1 dose within 2 days of birth	1 dose within 3 days of birth*	1 dose within 1 day of birth	1 dose within 2 days of birth	1 dose within 3 days of birth
2003		66.8 ± 4.2%		N/A	8	N/A
2004		69.3 ± 4.5%		N/A	8	N/A
2005		67.4 ± 5.3%		N/A	9	N/A
2006	65.2 ± 4.6%	67.6 ± 4.6%	69.5 ± 4.5%	5	11	10
2007	72.2 ± 6.1%	74.9 ± 5.9%	77.0 ± 5.6%	3	5	4
2008	73.9 ± 6.0%	79.2 ± 5.3%	81.4 ± 4.9%	2	1	1
2009	72.1 ± 6.1%	76.2 ± 5.8%	77.6 ± 5.7%	2	3	4
2010	78.9 ± 5.3%	79.5 ± 5.2%	80.4 ± 5.2%	2	4	3
2011	67.8 ± 8.3%	71.2 ± 8.2%	71.2 ± 8.2%	18	20	25
2012	74.8 ± 6.8%	81.4 ± 5.4%	83.0 ± 5.3%	8	5	4
2013	74.2 ± 6.3%	77.3 ± 6.1%	79.1 ± 5.8%	9	15	18
2014	73.7 ± 7.0%	75.3 ± 6.8%	76.1 ± 6.8%	15	24	24
2015	72.7 ± 6.4%	76.9 ± 6.1%	78.0 ± 6.0%	8	13	15
2016	72.2 ± 7.5%	74.9 ± 7.2%	75.6 ± 7.1%	6	15	16
2017	74.7 ± 6.2%	79.6 ± 5.6%	80.0 ± 5.5%	11	7	11

*No data available 2003-2005

2017 U.S. NATIONAL AVERAGE

Day 1: 65.7 ± 1.6%
Day 2: 72.0 ± 1.6%
Day 3: 73.6 ± 1.6%

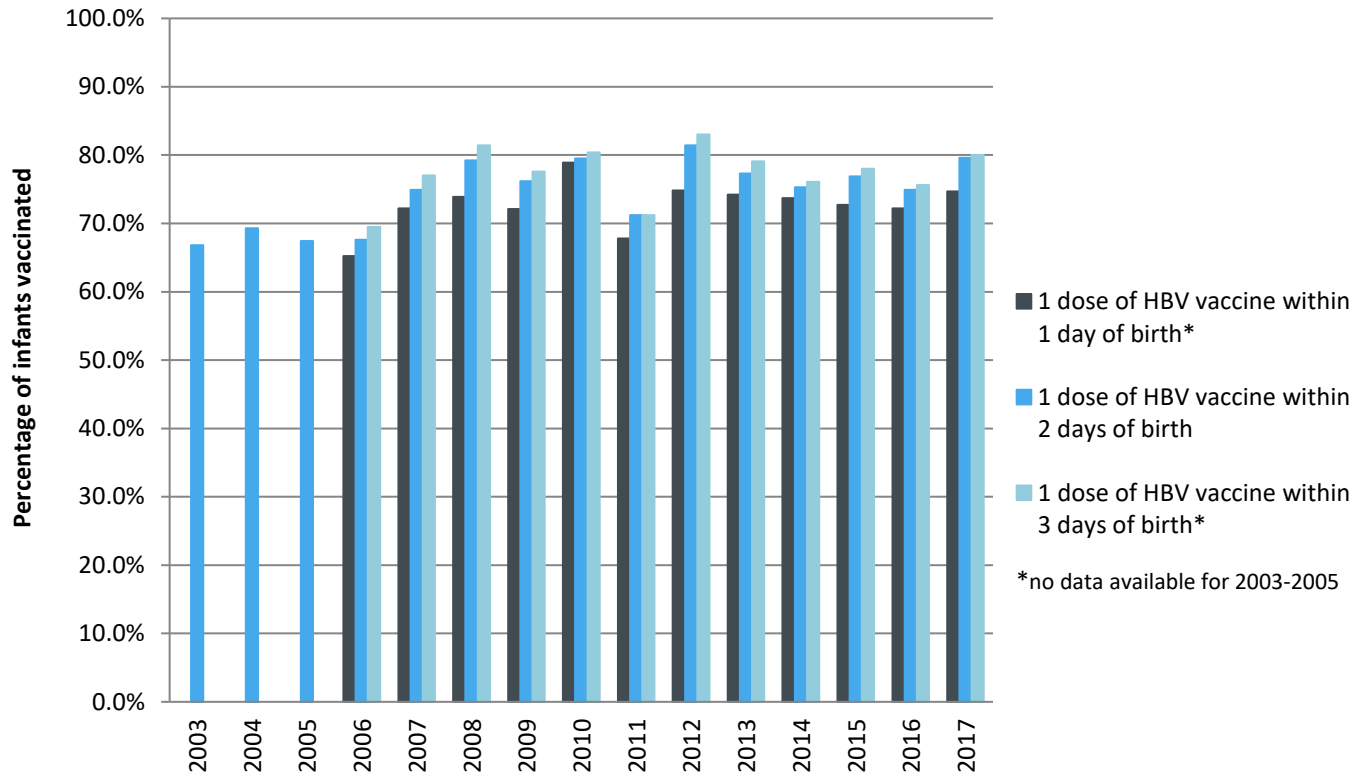
2017 HIGHEST BIRTH DOSE COVERAGE

Day 1: 82.0 ± 5.7% (Kentucky)
Day 2: 84.1 ± 5.6% (Kentucky)
Day 3: 84.1 ± 5.6% (Kentucky)

Data compiled by the ALC from National Immunization Surveys, 1995-2017¹,
<https://www.cdc.gov/vaccines/imz-managers/coverage/childvaxview/data-reports/hepb/index.html>

GRAPH:

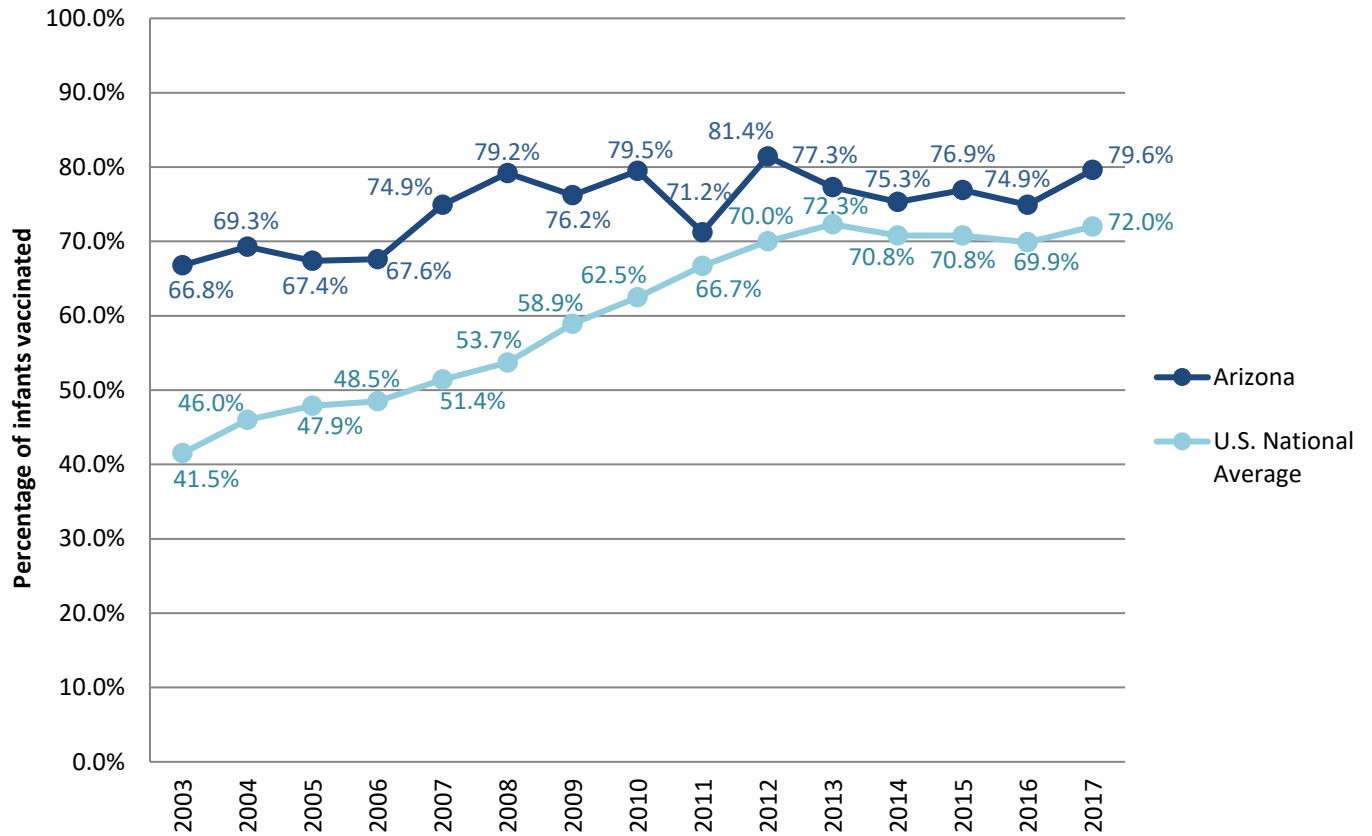
Estimated Vaccination Coverage for Hepatitis B Vaccine among Children from Birth to 3 Days of Age in Arizona



Data compiled by the ALC from National Immunization Surveys, 1995-2017¹,
<https://www.cdc.gov/vaccines/imz-managers/coverage/childvaxview/data-reports/hepb/index.html>

GRAPH:

Percentage of Infants Receiving 1 Dose of Hepatitis B Vaccine within 2 Days of Birth



Data compiled by the ALC from National Immunization Surveys, 1995-2017¹, <https://www.cdc.gov/vaccines/imz-managers/coverage/childvaxview/data-reports/hepb/index.html>

¹ The data from the National Immunization Surveys constitute a composite of data from children who were 19-35 months of age at the time of the survey. Therefore, the data might reflect a different estimate from the states' own birth cohort data.