

TENNESSEE

CONTACT THE STAFF

COORDINATOR:

Janice Johnson, RN
Email: M.Janice.Johnson@tn.gov
Phone: 615-253-1359
Fax: 615-532-8526 or 615-253-3279

ADDRESS:

TN Department of Health
Andrew Johnson Tower, 3rd Floor
710 James Robertson Parkway
Nashville, TN 37243

SCREENING REQUIREMENTS

Does the jurisdiction require screening of pregnant women for hepatitis B infection or hepatitis B surface antigen (HBsAg)?

Yes - Tenn. Code Ann. § 68-5-602 and Tenn. Comp. R. & Regs. 0250-4-7-.07

Does the jurisdiction specifically require reporting of positive HBsAg status in pregnant women?

Yes - Tenn. Code Ann. § 68-5-602 and Tenn. Comp. R. & Regs. 1200-14-1-.02

COMPLETION OF HEPATITIS B VACCINATION SERIES

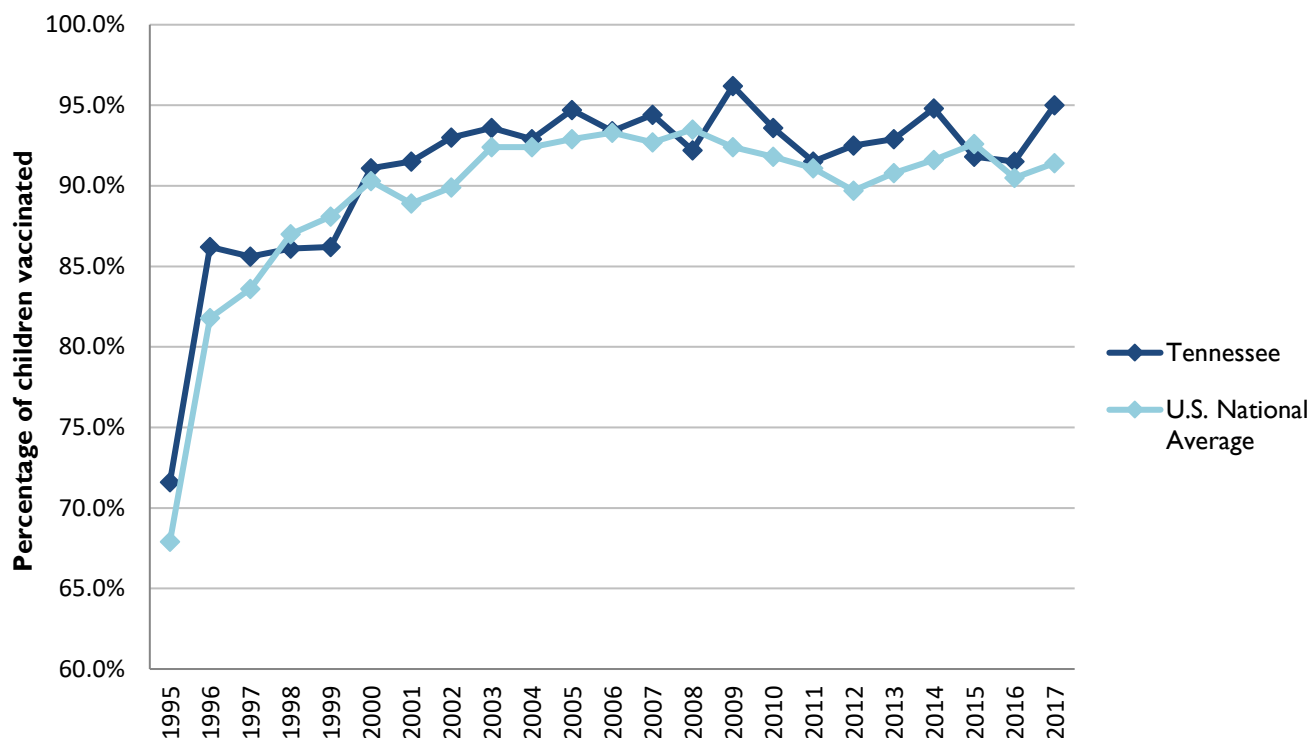
3 or more doses among children 19-35 months of age

	Percentage of children 19-35 months of age receiving 3 or more doses	Rank among other states	U.S. National Average	#1 ranked state and coverage
1995	71.6 ± 5.0%	18	67.9 ± 1.3%	88.5 ± 5.4% (South Carolina)
1996	86.2 ± 3.1%	10	81.8 ± 0.9%	95.8 ± 2.2% (South Carolina)
1997	85.6 ± 3.1%	21	83.6 ± 0.8%	91.6 ± 4.2% (New Jersey)
1998	86.1 ± 3.1%	33	87.0 ± 0.7%	94.1 ± 2.7% (South Carolina)
1999	86.2 ± 3.1%	38	88.1 ± 0.7%	94.0 ± 3.1% (Rhode Island)
2000	91.1 ± 2.9%	20	90.3 ± 0.6%	96.4 ± 1.9% (Rhode Island)
2001	91.5 ± 2.6%	9	88.9 ± 0.7%	95.8 ± 2.2% (Rhode Island)
2002	93.0 ± 2.4%	11	89.9 ± 0.7%	97.0 ± 2.0% (Rhode Island)
2003	93.6 ± 2.5%	18	92.4 ± 0.6%	98.2 ± 1.4% (Connecticut)
2004	92.9 ± 2.9%	29	92.4 ± 0.6%	96.8 ± 1.7% (Florida)
2005	94.7 ± 2.4%	13	92.9 ± 0.6%	97.9 ± 2.0% (Massachusetts)
2006	93.4 ± 3.2%	25	93.3 ± 0.6%	97.8 ± 1.6% (Rhode Island)
2007	94.4 ± 3.9%	18	92.7 ± 0.7%	98.6 ± 1.5% (New Hampshire)
2008	92.2 ± 4.5%	38	93.5 ± 0.7%	98.1 ± 1.6% (Connecticut)
2009	96.2 ± 2.5%	6	92.4 ± 0.7%	98.8 ± 1.5% (Rhode Island)
2010	93.6 ± 3.5%	21	91.8 ± 0.7%	98.3 ± 1.5% (North Dakota)
2011	91.5 ± 3.7%	22	91.1 ± 0.7%	97.1 ± 1.7% (Louisiana)
2012	92.5 ± 4.0%	12	89.7 ± 0.9%	96.3 ± 3.0% (Georgia)
2013	92.9 ± 3.9%	18	90.8 ± 1.0%	96.7 ± 2.3% (Rhode Island)
2014	94.8 ± 3.0%	10	91.6 ± 0.9%	97.6 ± 1.8% (Louisiana)
2015	91.8 ± 4.8%	32	92.6 ± 0.7%	97.3 ± 2.3% (Connecticut)
2016	91.5 ± 4.0%	27	90.5 ± 1.1%	97.4 ± 1.9% (Iowa)
2017	95.0 ± 3.1%	6	91.4 ± 0.9%	97.7 ± 1.6% (North Dakota)

Data compiled by the ALC from National Immunization Surveys, 1995-2017¹,
<https://www.cdc.gov/vaccines/imz-managers/coverage/childvaxview/data-reports/hepb/index.html>

GRAPH:

Percentage of Children 19-35 Months of Age Receiving 3 or More Doses of Hepatitis B Vaccine



Data compiled by the ALC from National Immunization Surveys, 1995-2017¹,
<https://www.cdc.gov/vaccines/imz-managers/coverage/childvaxview/data-reports/hepb/index.html>

HEPATITIS B BIRTH DOSE VACCINATION COVERAGE

1 or more dose among infants within 3 days of birth

	Percentage of infants receiving			Rank among other states according to		
	1 dose within 1 day of birth*	1 dose within 2 days of birth	1 dose within 3 days of birth*	1 dose within 1 day of birth	1 dose within 2 days of birth	1 dose within 3 days of birth
2003		23.5 ± 4.3%		N/A	43	N/A
2004		29.2 ± 4.8%		N/A	44	N/A
2005		30.3 ± 5.3%		N/A	42	N/A
2006	27.6 ± 5.9%	30.8 ± 6.1%	32.4 ± 6.2%	41	43	42
2007	37.1 ± 7.6%	37.9 ± 7.6%	40.0 ± 7.7%	38	40	40
2008	33.1 ± 6.3%	34.8 ± 6.3%	35.8 ± 6.4%	41	46	46
2009	45.3 ± 6.6%	48.2 ± 6.7%	49.7 ± 6.7%	37	42	42
2010	50.5 ± 6.8%	52.4 ± 6.8%	55.3 ± 6.8%	36	44	44
2011	55.6 ± 7.5%	60.0 ± 7.5%	61.9 ± 7.1%	37	42	43
2012	63.2 ± 7.4%	67.5 ± 7.2%	68.8 ± 7.0%	30	35	37
2013	70.9 ± 6.3%	74.7 ± 6.1%	76.6 ± 5.8%	18	26	24
2014	77.0 ± 6.3%	79.0 ± 6.2%	79.5 ± 6.1%	4	13	14
2015	62.4 ± 8.0%	64.3 ± 8.0%	64.7 ± 7.9%	33	44	46
2016	57.4 ± 7.9%	59.6 ± 7.9%	60.2 ± 7.9%	41	47	47
2017	68.7 ± 6.9%	72.9 ± 6.7%	73.9 ± 6.5%	27	30	30

*No data available 2003-2005

2017 U.S. NATIONAL AVERAGE

Day 1: 65.7 ± 1.6%
Day 2: 72.0 ± 1.6%
Day 3: 73.6 ± 1.6%

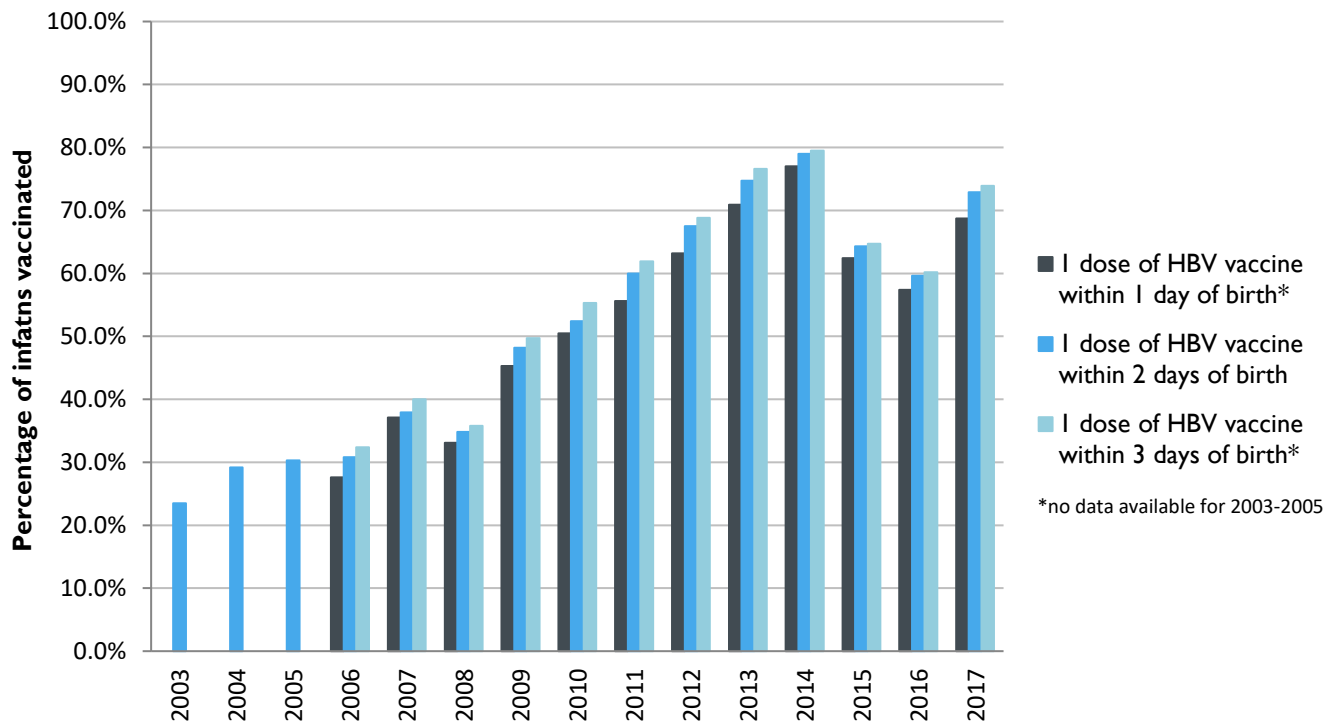
2017 HIGHEST BIRTH DOSE COVERAGE

Day 1: 82.0 ± 5.7% (Kentucky)
Day 2: 84.1 ± 5.6% (Kentucky)
Day 3: 84.1 ± 5.6% (Kentucky)

Data compiled by the ALC from National Immunization Surveys, 1995-2017¹,
<https://www.cdc.gov/vaccines/imz-managers/coverage/childvaxview/data-reports/hepb/index.html>

GRAPH:

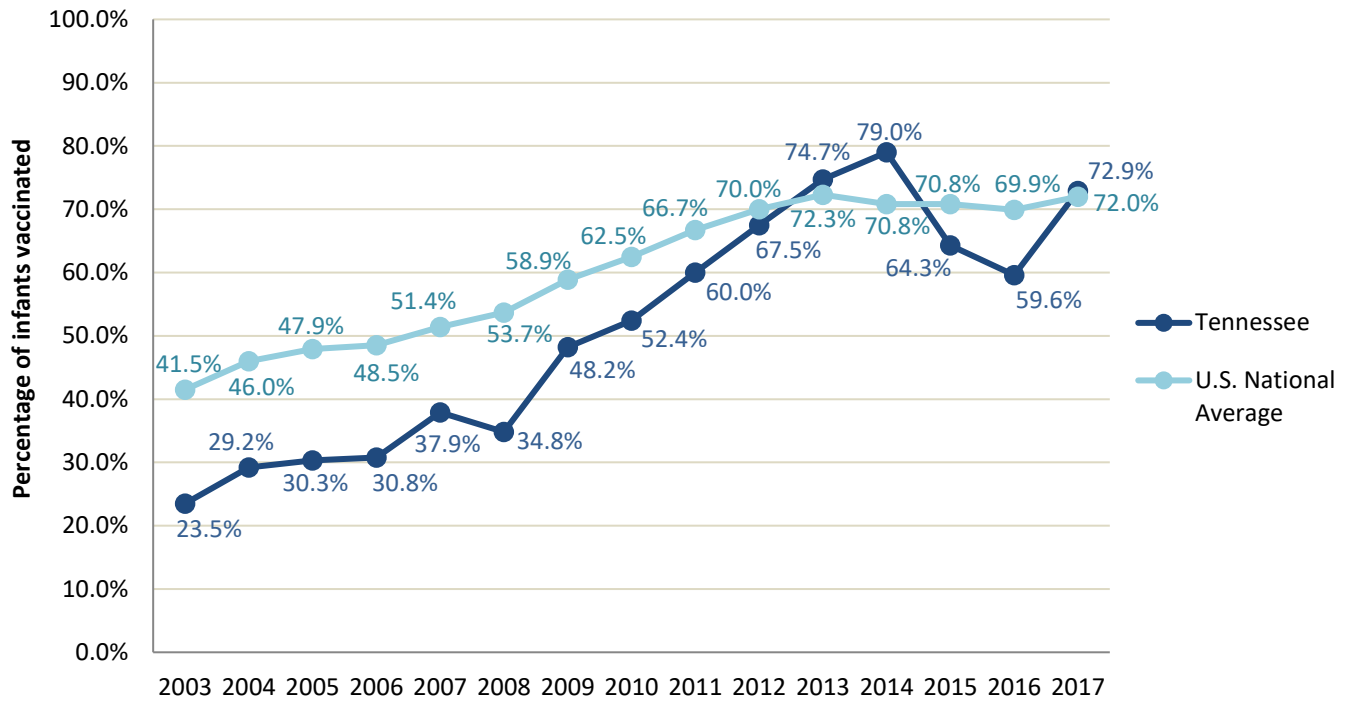
Estimated Vaccination Coverage for Hepatitis B Vaccine among Children from Birth to 3 Days of Age in Tennessee



Data compiled by the ALC from National Immunization Surveys, 1995-2017¹,
<https://www.cdc.gov/vaccines/imz-managers/coverage/childvaxview/data-reports/hepb/index.html>

GRAPH:

Percentage of Infants Receiving 1 Dose of Hepatitis B Vaccine within 2 Days of Birth



Data compiled by the ALC from National Immunization Surveys, 1995-2017¹,
<https://www.cdc.gov/vaccines/imz-managers/coverage/childvaxview/data-reports/hepb/index.html>

¹ The data from the National Immunization Surveys constitute a composite of data from children who were 19-35 months of age at the time of the survey. Therefore, the data might reflect a different estimate from the states' own birth cohort data.