

TEXAS

CONTACT THE STAFF

COORDINATOR:

Eva Hansson, RN, MSN
Email: jill.campbell@dshs.texas.gov
Phone: 512-776-6634
Fax: 512-776-7544

ADDRESS:

Texas Department of State Health Services
P.O. Box 149347, MC 1946
Austin, TX 78714-9347

SECONDARY COORDINATOR:

Khalilah Loggins
Email: Khalilah.Loggins@dshs.texas.gov
Phone: 512-776-6813

For a list of County coordinators, go to this website:

http://www.dshs.state.tx.us/idcu/disease/hepatitis/hepatitis_b/perinatal/Contacts/

SCREENING REQUIREMENTS

Does the jurisdiction require screening of pregnant women for hepatitis B infection or hepatitis B surface antigen (HBsAg)?

Yes - Tex. Health & Safety Code § 81.090(a) and 25 Tex. Admin. Code § 97.135(a)(5)(c)

Does the jurisdiction specifically require reporting of positive HBsAg status in pregnant women?

Yes - 25 Tex. Admin. Code § 97.135(g) and 25 Tex. Admin. Code § 97.3(a)(2)

COMPLETION OF HEPATITIS B VACCINATION SERIES

3 or more doses among children 19-35 months of age

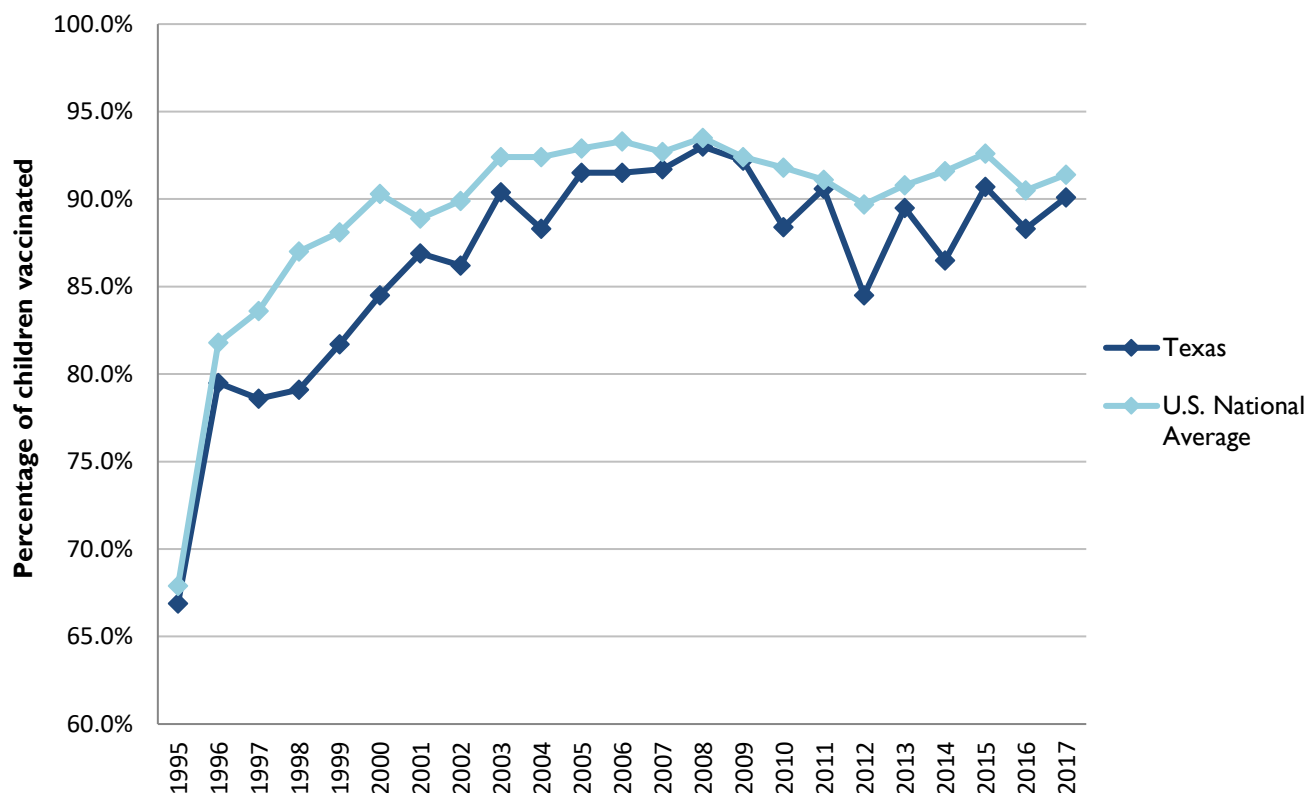
	Percentage of children 19-35 months of age receiving 3 or more doses	Rank among other states	U.S. National Average	#1 ranked state and coverage
1995	66.9 ± 4.9%	23	67.9 ± 1.3%	88.5 ± 5.4% (South Carolina)
1996	79.5 ± 3.7%	33	81.8 ± 0.9%	95.8 ± 2.2% (South Carolina)
1997	78.6 ± 3.8%	47	83.6 ± 0.8%	91.6 ± 4.2% (New Jersey)
1998	79.1 ± 3.5%	50	87.0 ± 0.7%	94.1 ± 2.7% (South Carolina)
1999	81.7 ± 3.3%	48	88.1 ± 0.7%	94.0 ± 3.1% (Rhode Island)
2000	84.5 ± 3.1%	49	90.3 ± 0.6%	96.4 ± 1.9% (Rhode Island)
2001	86.9 ± 2.7%	35	88.9 ± 0.7%	95.8 ± 2.2% (Rhode Island)
2002	86.2 ± 3.8%	46	89.9 ± 0.7%	97.0 ± 2.0% (Rhode Island)
2003	90.4 ± 2.4%	36	92.4 ± 0.6%	98.2 ± 1.4% (Connecticut)
2004	88.3 ± 2.9%	49	92.4 ± 0.6%	96.8 ± 1.7% (Florida)
2005	91.5 ± 2.6%	32	92.9 ± 0.6%	97.9 ± 2.0% (Massachusetts)
2006	91.5 ± 2.3%	38	93.3 ± 0.6%	97.8 ± 1.6% (Rhode Island)
2007	91.7 ± 2.6%	40	92.7 ± 0.7%	98.6 ± 1.5% (New Hampshire)
2008	93.0 ± 3.5%	29	93.5 ± 0.7%	98.1 ± 1.6% (Connecticut)
2009	92.2 ± 2.4%	28	92.4 ± 0.7%	98.8 ± 1.5% (Rhode Island)
2010	88.4 ± 2.7%	45	91.8 ± 0.7%	98.3 ± 1.5% (North Dakota)
2011	90.6 ± 2.2%	31	91.1 ± 0.7%	97.1 ± 1.7% (Louisiana)
2012	84.5 ± 3.3%	48	89.7 ± 0.9%	96.3 ± 3.0% (Georgia)
2013	89.5 ± 3.3%	36	90.8 ± 1.0%	96.7 ± 2.3% (Rhode Island)
2014	86.5 ± 3.7%	48	91.6 ± 0.9%	97.6 ± 1.8% (Louisiana)
2015	90.7 ± 2.9%	40	92.6 ± 0.7%	97.3 ± 2.3% (Connecticut)
2016	88.3 ± 3.0%	44	90.5 ± 1.1%	97.5 ± 1.9% (Iowa)
2017	90.1 ± 2.2%	39	91.4 ± 0.9%	97.7 ± 1.6% (North Dakota)

Data compiled by the ALC from National Immunization Surveys, 1995-2017¹,

<https://www.cdc.gov/vaccines/imz-managers/coverage/childvaxview/data-reports/hepb/index.html>

GRAPH:

Percentage of Children 19-35 Months of Age Receiving 3 or More Doses of Hepatitis B Vaccine



Data compiled by the ALC from National Immunization Surveys, 1995-2017¹,
<https://www.cdc.gov/vaccines/imz-managers/coverage/childvaxview/data-reports/hepb/index.html>

HEPATITIS B BIRTH DOSE VACCINATION COVERAGE

1 or more dose among infants within 3 days of birth

	Percentage of infants receiving			Rank among other states according to		
	1 dose within 1 day of birth*	1 dose within 2 days of birth	1 dose within 3 days of birth*	1 dose within 1 day of birth	1 dose within 2 days of birth	1 dose within 3 days of birth
2003		56.1 ± 4.4%		N/A	21	N/A
2004		64.5 ± 4.4%		N/A	16	N/A
2005		62.6 ± 4.7%		N/A	12	N/A
2006	54.8 ± 4.3%	60.4 ± 4.2%	61.7 ± 4.2%	17	21	21
2007	61.6 ± 4.8%	63.6 ± 4.8%	63.9 ± 4.8%	12	16	19
2008	60.5 ± 5.7%	65.4 ± 5.6%	66.6 ± 5.5%	14	16	18
2009	65.0 ± 5.1%	67.8 ± 5.0%	69.8 ± 4.8%	12	14	14
2010	64.3 ± 4.3%	69.1 ± 4.2%	69.6 ± 4.2%	12	16	19
2011	72.5 ± 4.2%	77.2 ± 3.8%	78.6 ± 3.8%	8	10	9
2012	69.3 ± 3.8%	73.0 ± 3.7%	74.6 ± 3.7%	17	22	23
2013	75.3 ± 4.5%	80.6 ± 4.0%	81.8 ± 3.9%	4	6	8
2014	72.4 ± 4.6%	76.9 ± 4.4%	77.4 ± 4.4%	17	20	21
2015	72.1 ± 4.0%	75.5 ± 4.0%	76.4 ± 3.9%	11	16	20
2016	70.4 ± 3.9%	75.6 ± 3.5%	76.4 ± 3.5%	14	12	13
2017	69.6 ± 3.4%	74.7 ± 3.3%	76.3 ± 3.2%	24	23	23

*No data available 2003-2005

2017 U.S. NATIONAL AVERAGE

Day 1: 65.7 ± 1.6%
Day 2: 72.0 ± 1.6%
Day 3: 73.6 ± 1.6%

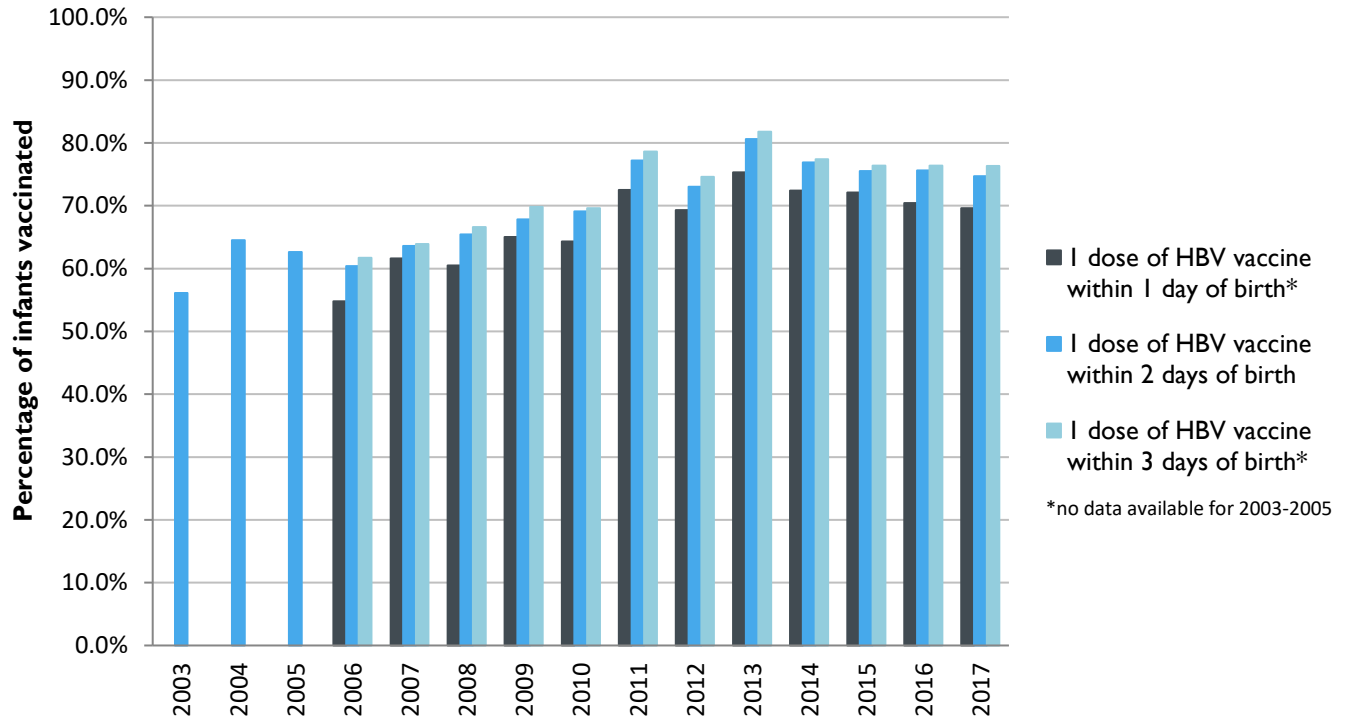
2017 HIGHEST BIRTH DOSE COVERAGE

Day 1: 82.0 ± 5.7% (Kentucky)
Day 2: 84.1 ± 5.6% (Kentucky)
Day 3: 84.1 ± 5.6% (Kentucky)

Data compiled by the ALC from National Immunization Surveys, 1995-2017¹,
<https://www.cdc.gov/vaccines/imz-managers/coverage/childvaxview/data-reports/hepb/index.html>

GRAPH:

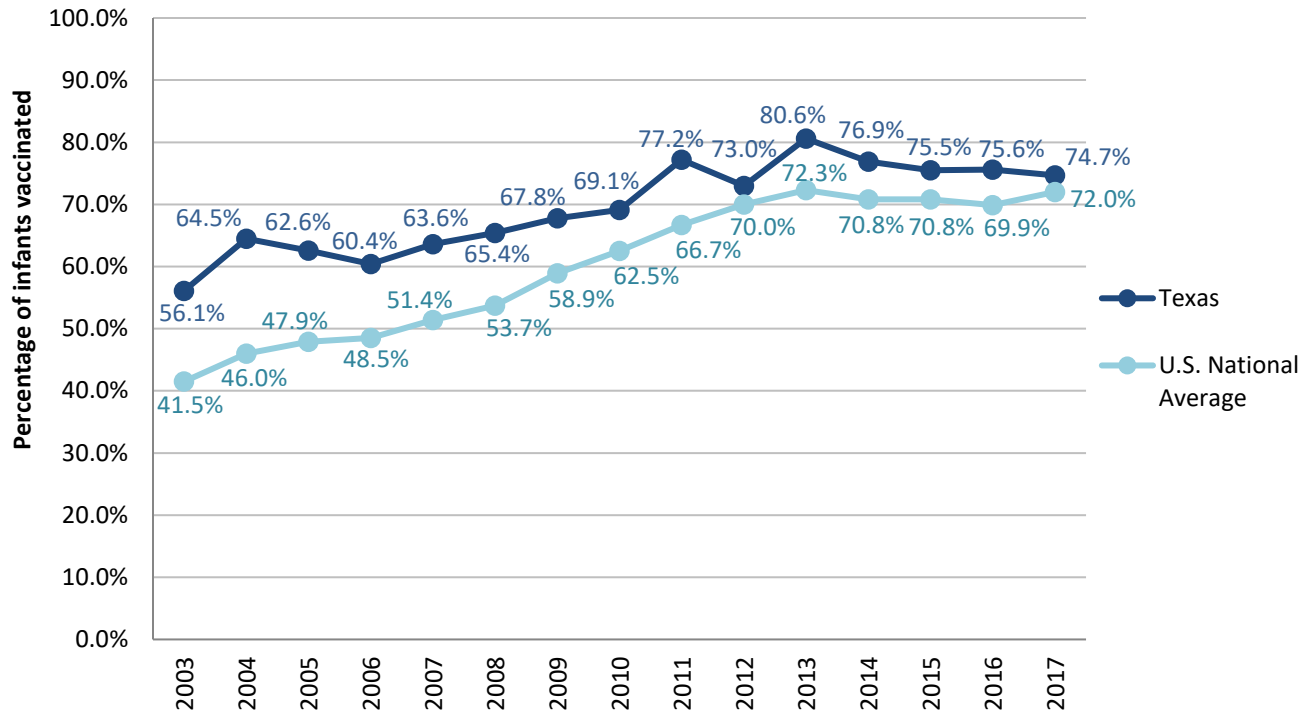
Estimated Vaccination Coverage for Hepatitis B Vaccine among Children from Birth to 3 Days of Age in Texas



Data compiled by the ALC from National Immunization Surveys, 1995-2017¹,
<https://www.cdc.gov/vaccines/imz-managers/coverage/childvaxview/data-reports/hepb/index.html>

GRAPH:

Percentage of Infants Receiving 1 Dose of Hepatitis B Vaccine within 2 Days of Birth



Data compiled by the ALC from National Immunization Surveys, 1995-2017¹, <https://www.cdc.gov/vaccines/imz-managers/coverage/childvaxview/data-reports/hepb/index.html>

¹ The data from the National Immunization Surveys constitute a composite of data from children who were 19-35 months of age at the time of the survey. Therefore, the data might reflect a different estimate from the states' own birth cohort data.